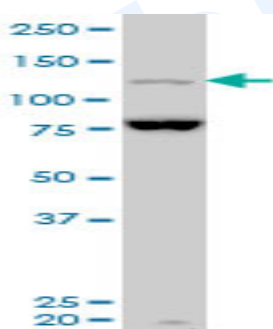


## Mouse polyclonal antibody to human Mam-3: whole serum

<b>Catalogue No.:</b>	Mo-946-50
<b>Description:</b>	Mam-3 acts as a transcriptional coactivator for NOTCH proteins. It has been shown to amplify NOTCH-induced transcription of HES1. Mam-3 is a nuclear protein that contains an N-terminal basic domain, a central acidic domain, and a C-terminal acidic domain. It interacts through its N-terminal region with the ankyrin repeat region of the Notch proteins NOTCH1, NOTCH2, NOTCH3 and NOTCH4. It forms a DNA-binding complex with Notch proteins and RBPSUH/RBP-J kappa. The C-terminal domain is required for transcriptional activation. Mam-3 belongs to the mastermind family.
<b>Batch No.:</b>	See product label
<b>Unit size:</b>	50 uL
<b>Antigen:</b>	Partial recombinant human MAM-3 (1024-1131) with a GST tag.
<b>Other Names:</b>	Mastermind-like protein 3; MAML3; KIAA1816
<b>Accession:</b>	MAML3_HUMAN
<b>Produced in:</b>	Mouse
<b>Purity:</b>	Whole serum
<b>Applications:</b>	This antibody is recommended for WB and ELISA. Biosensis recommends optimal dilutions/concentrations should be determined by the end user.
<b>Specificity:</b>	Specificity has been confirmed by WB and direct ELISA against the antigen.
<b>Cross-reactivity:</b>	Human. Other species have not been tested.
<b>Form:</b>	Liquid. 50% glycerol
<b>Storage:</b>	Keep aliquots at -20C for higher stability or at 2-8C with an appropriate antibacterial agent. Avoid repetitive freeze/thaw cycles.
<b>Expiry Date:</b>	12 months after purchase



Western blot detection of Mam-3 in human uterine sarcoma, MDR variant, whole cell lysate.

FOR RESEARCH USE ONLY