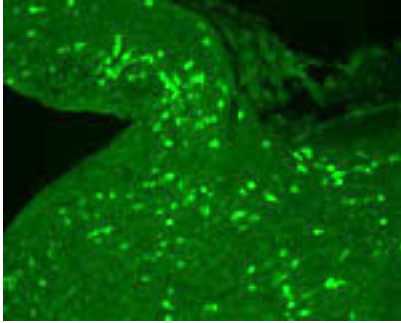


Guinea pig polyclonal antibody to gamma MSH (77-88): Whole serum

Catalogue No.:	GP-031-50
Description:	Proopiomelanocortin (POMC) is the precursor of the melanocortin peptides alpha, beta and gamma. POMC neurons in the arcuate nucleus of the hypothalamus function as key central regulators of food intake and homeostatic control of energy balance in both rodents and non-human primates.
Batch No.:	See product label
Unit size:	50 uL
Antigen:	A synthetic peptide (YVMGHFRWDRFG) corresponding to the amino acids 77-88 from human Proopiomelanocortin (POMC). POMC is the precursor of the melanocortin peptides alpha, beta and gamma. The synthetic peptide was conjugated to carrier protein to enhance the immunological response.
Other Names:	Gamma-melanocyte stimulating hormone; Melanotropin gamma; Corticotropin-lipotropin [Precursor]; Pro-opiomelanocortin; POMC
Accession:	COLI_HUMAN
Produced in:	Guinea pig
Purity:	Whole serum
Applications:	IHC. A concentration of 1 in 2000 is recommended for IHC. This antibody shows excellent staining on sheep and human tissue. Rodent tissues demonstrate high background staining. Biosensis recommends optimal dilutions/concentrations should be determined by the end user.
Specificity:	Human. Specificity was demonstrated by immunohistochemistry.
Cross-reactivity:	This antiserum is known to react with sheep gamma MSH. Other species have not yet been tested.
Form:	Lyophilised
Reconstitution:	Reconstitute in 50 uL sterile water. Centrifuge to remove any insoluble material.
Storage:	It is recommended that a thawed sample is stored at 2-8C for no longer than 2 weeks. Allocation of appropriate anti-bacterial agent can increase shelf life by several weeks. Diluted serum should be prepared as required. Long term stability requires storage, preferably in small aliquots at -20C or lower. Glycerol (1:1) can be added to neat serum for additional stability if intended use does not prevent this.
Expiry Date:	12 months upon reconstitution

FOR RESEARCH USE ONLY

Guinea pig polyclonal antibody to gamma MSH (77-88): Whole serum



The cryostat section of the sheep hypothalamus was incubated in guinea pig polyclonal antibodies to the gamma melanocyte-stimulating hormone at the dilution of 1:1000 overnight followed by incubation with FITC-conjugated secondary antibodies. Cell bodies and nerve terminals in the sheep brain are intensely stained.

biosensis

FOR RESEARCH USE ONLY