

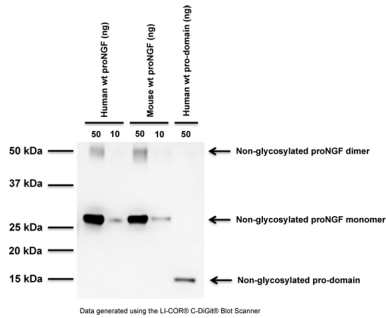
## Sheep antibody to human proNGF: whole serum

<b>Catalogue No.:</b>	S-080-100
<b>Description:</b>	Nerve growth factor (NGF) is synthesized as a precursor (proNGF) which may be released and have physiological functions to cause cell death. It binds neurotrophin receptor p75 and sortilin and may also be important for the development of nervous system. proNGF is synthesized in target tissues and glia, transported retrogradely and may be released. This antibody is raised in sheep to detect the prodomain of NGF not the mature peptide.
<b>Batch No.:</b>	See product label
<b>Unit size:</b>	100 uL
<b>Antigen:</b>	The recombinant prodomain fragment of human nerve growth factor
<b>Other Names:</b>	pro-brain nerve growth factor; proNGF; NGF;
<b>Accession:</b>	NGF_HUMAN
<b>Produced in:</b>	Sheep
<b>Purity:</b>	Whole serum
<b>Applications:</b>	IHC, Immunofluorescence, ELISA, Western Blot, biological neutralization of proNGF. Biosensis recommends optimal dilutions/concentrations should be determined by the end user.
<b>Specificity:</b>	The specificity of this antibody has been confirmed by WB. It does NOT crossreact with proBDNF, proNT-3 or mature NGF.
<b>Cross-reactivity:</b>	Confirmed to react with purified human proNGF and crossreact with mouse and rat proNGF
<b>Form:</b>	Lyophilised
<b>Reconstitution:</b>	Reconstitute in 100 uL of sterile water. Centrifuge to remove any insoluble material.
<b>Storage:</b>	Maintain lyophilized antibody at 2-8C for up to 12 months after date of receipt. After reconstitution keep undiluted aliquots at -20C for up to 6 months for higher stability or at 2-8C with an appropriate antibacterial agent. Glycerol (1:1) may be added for additional stability. Avoid repetitive freeze/thaw cycles.
<b>Expiry Date:</b>	12 months after purchase (lyophilized)
<b>Specific References:</b>	Ryu JC et al. (2018). Role of proNGF/p75 signaling in bladder dysfunction after spinal cord injury. J Clin Invest. [Epub ahead of print]. Application: Western Blotting.
<b>General References:</b>	Srinivasan B et al. J Biol Chem. 2004 Oct 1;279(40):41839-45. Yune TY et al. J Neurosci. 2007 Jul 18;27(29):7751-61.

---

FOR RESEARCH USE ONLY

## Sheep antibody to human proNGF: whole serum



Western blot of proNGF proteins produced in E.Coli. S-080-100 detects the human and mouse form of proNGF as well as the pro-domain peptide. SDS-PAGE: denatured and reduced; Transfer: Tris-Glycine buffer; Membrane: nitrocellulose (0.45  $\mu$ m); Blocking: 5% skim milk in TBST, 2 hours at RT; Primary antibody: overnight at 4°C (1:1000 dilution); Secondary antibody: anti-sheep-HRP (1/3000), 2 hours at RT; Detection: Chemiluminescence.

biosensis

FOR RESEARCH USE ONLY