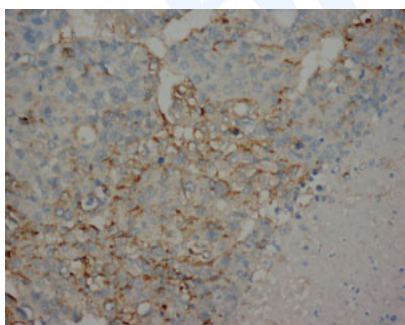




Mouse monoclonal antibody to human alpha-fetoprotein [AP-1]: IgG

Catalogue No.:	M-965-100
Description:	Alpha-fetoprotein is a serum protein produced during fetal development and by hepatocytes. High levels of expression in adults is associated with hepatoma or teratoma.
Batch No.:	See product label
Unit size:	100 ug
Antigen:	Purified human alpha-fetoprotein
Clone:	AP-1
Other Names:	HPAFP; Alpha-fetoglobulin; AFP;
Accession:	P02771 FETA_HUMAN
Produced in:	Mouse
Purity:	IgG
Applications:	Immunohistochemistry (IHC). A concentration of 2.0-4.0 ug/mL is recommended to detect alpha fetoprotein in formalin fixed and paraffin embedded tissues. Biosensis recommends optimal dilutions/concentrations should be determined by the end user.
Specificity:	The specificity of this antibody has been confirmed by IHC against the antigen.
Cross-reactivity:	Human;
Form:	Lyophilized from 1.2% sodium acetate, 2mg BSA, 0.01mg NaN3
Reconstitution:	Reconstitute in 1 mL of PBS (pH 7.4) to achieve an antibody concentration of 100 ug/mL. Centrifuge to remove any insoluble material.
Storage:	At least 12 months after purchase at 2-8C (lyophilized formulations). After reconstitution, aliquot and store at -20C for a higher stability. Avoid freeze-thaw cycles.
Expiry Date:	12 months after purchase



Immunohistochemical detection of human alpha-fetoprotein in paraffin-embedded human liver cancer tissue using mouse monoclonal antibody to alpha-fetoprotein (1:200), catalogue number M-965-100 followed by incubation with goat anti-mouse IgG antibody.

FOR RESEARCH USE ONLY