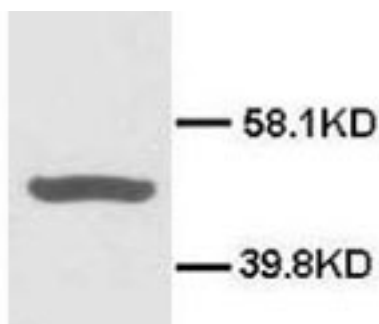


Rabbit polyclonal antibody to CD40 (16-31): Affinity purified

Catalogue No.:	R-1013-100
Description:	THIS PRODUCT HAS BEEN SUPERCEDED. PLEASE REFER TO THE "REPLACED BY" FIELD BELOW TO LOCATE THE CURRENT BIOSENSIS PRODUCT TO MEET YOUR RESEARCH NEEDS. CD40 is a member of the tumour necrosis factor (TNF) receptor superfamily and is the receptor for the CD40 ligand (CD40L). CD40 has at least 2 isoforms produced by alternate splicing. Isoform 1 is a single-pass type 1 membrane protein. Isoform 2 is a secreted protein. Microglia and astrocytes interact via the CD40 receptor and CD40 ligand.
Replaced by:	R-1730-100
Batch No.:	See product label
Unit size:	100 µg
Antigen:	A synthetic peptide (TAVHLGQCVTCS DKQY) corresponding to a region (16-31) from the N-terminus of mouse CD40.
Other Names:	Tumour necrosis factor receptor superfamily member 5; CD40L receptor; Bp50; TNFRSF5;
Accession:	P27512 TNR5_MOUSE; Q4QQW2 Q4QQW2_RAT
Produced in:	Rabbit
Purity:	Affinity purified on antigen column
Applications:	Western Blotting (WB). A concentration of 1.0-2.0 µg/ml is recommended for WB. The predicted length of mouse CD40 is 289 residues and a MW of 32 kDa. The observed band size is approximately 45 kDa. Biosensis recommends optimal dilutions/concentrations should be determined by the end user.
Specificity:	The specificity of this antibody has been confirmed by WB against the antigen.
Cross-reactivity:	Mouse; rat; rabbit;
Form:	Liquid (0.5ml). 50% glycerol, 0.9mg NaCl and 0.2mg Na ₂ HPO ₄
Reconstitution:	The liquid formulation should be diluted in PBS (pH 7.4)
Storage:	After reconstitution, aliquot and store at -20°C for a higher stability. Avoid freeze-thaw cycles.
Expiry Date:	12 months after purchase
References:	Ke Z.J. et al. CD40-CD40L interactions promote neuronal death in a model of neurodegeneration due to mild impairment of oxidative metabolism. <i>Neurochem Int.</i> 2005 Aug;47(3):204-15.



Western blot using CD40 antibody R-1013-100 at 1-2 µg/ml in Hela cell lysate. Secondary antibody HRP conjugated goat anti-rabbit IgG at 1:3000 dilution.

FOR RESEARCH USE ONLY