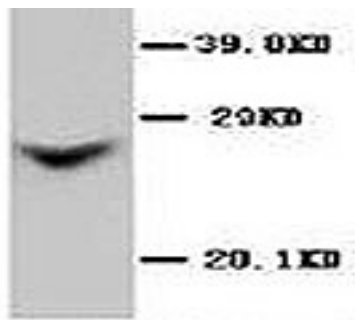


## Rabbit polyclonal antibody to Connexin-26 (211-226): Affinity purified

<b>Catalogue No.:</b>	R-1005-100
<b>Description:</b>	A gap junction consists of a cluster of closely packed pairs of transmembrane channels, the connexins, through which materials of low molecular weight diffuse from one cell to a neighbouring cell. Each connexin is composed of a hexamer of connexin proteins. Connexins are a multi-gene family of highly related proteins. At least a dozen distinct connexin genes have been identified and many are expressed in a tissue-specific manner. Two distinct lineages, class I (beta) and class II (alpha), have been identified in mammals. Connexin-26 belongs to the class 1 (beta) group of connexins. Mutations in Connexin-26 are associated with genetically derived hearing impairments, including autosomal recessive non syndromic deafness.
<b>Batch No.:</b>	See product label
<b>Unit size:</b>	100 ug
<b>Antigen:</b>	A synthetic peptide (CYLFIRYCSGKSKRPV) corresponding to the amino acid sequence 211-226 from rat Connexin-26.
<b>Other Names:</b>	GJB2; Cx26; Gap junction beta-2 protein;
<b>Accession:</b>	P21994 CXB2_RAT; P29033 CXB2_HUMAN
<b>Produced in:</b>	Rabbit
<b>Purity:</b>	Affinity purified on antigen column
<b>Applications:</b>	Western Blotting (WB). A concentration of 1.0-2.0 ug/mL is recommended for WB. The predicted length of rat Connexin-26 is 226 residues and MW of 26 kDa. Biosensis recommends optimal dilutions/concentrations should be determined by the end user.
<b>Specificity:</b>	The specificity of this antibody has been confirmed by WB against the antigen.
<b>Cross-reactivity:</b>	Human; mouse; rat; rabbit;
<b>Form:</b>	Liquid (0.5ml). 50% glycerol, 0.9mg NaCl and 0.2mg Na <sub>2</sub> HPO <sub>4</sub>
<b>Reconstitution:</b>	The liquid formulation should be diluted in PBS (pH 7.4)
<b>Storage:</b>	After reconstitution, aliquot and store at -20C for a higher stability. Avoid freeze-thaw cycles.
<b>Expiry Date:</b>	12 months after purchase



Western blot of Connexin 26 antibody R-1005-100 at 1-2 µg/ml in rat liver sections. Secondary antibody HRP conjugated goat anti-rabbit IgG at 1:3000 dilution.

FOR RESEARCH USE ONLY