



## Rabbit polyclonal antibody to EAAT1/GLAST1 (516-531): Affinity purified

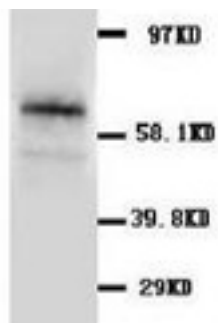
<b>Catalogue No.:</b>	R-1009-100
<b>Description:</b>	THIS PRODUCT IS TEMPORARILY OUT OF STOCK. PLEASE REFER TO THE "REPLACED BY" FIELD BELOW TO LOCATE THE CURRENT BIOSENSIS PRODUCT TO MEET YOUR RESEARCH NEEDS. Excitatory amino acid transporter 1 (EAAT1) is a glutamate transporter (GluT). It rapidly removes L-glutamate from the synaptic cleft which is essential for terminating the postsynaptic action of glutamate. EAAT1 is also known as high affinity sodium-dependent glutamate/aspartate transporter 1 (GLAST1). EAAT1 is highly expressed in cerebellum but is also found in the frontal cortex, hippocampus and basal ganglia.
<b>Batch No.:</b>	See product label
<b>Unit size:</b>	100 ug
<b>Antigen:</b>	A synthetic peptide (ENEMKKPYQLIAQDNE) corresponding to a region 516-531 from the C-terminus of human EAAT1/GLAST1.
<b>Other Names:</b>	SLC1A3; GLAST; GLT-1;
<b>Accession:</b>	P43003 EAA1_HUMAN; P24942 EAA1_RAT
<b>Produced in:</b>	Rabbit
<b>Purity:</b>	Affinity purified on antigen column
<b>Applications:</b>	Western Blotting (WB). A concentration of 0.5-1.0 ug/mL is recommended for WB. Human EAAT1 has a predicted length of 542 residues and a MW of 60 kDa. Biosensis recommends optimal dilutions/concentrations should be determined by the end user.
<b>Specificity:</b>	The specificity of this antibody has been confirmed by WB against the antigen.
<b>Cross-reactivity:</b>	Human; mouse; rat;
<b>Form:</b>	Lyophilised
<b>Reconstitution:</b>	Each vial contains 5 mg of BSA, 0.9 mg NaCl, 0.2 mg Na <sub>2</sub> HPO <sub>4</sub> , 0.05 mg Thimerosal and 0.05 mg NaN <sub>3</sub> . Reconstitute in 100 uL of sterile water. Centrifuge to remove any insoluble material.
<b>Storage:</b>	At least 12 months after purchase at 2-8C (lyophilized formulations). After reconstitution, aliquot and store at -20C for a higher stability and at 2-8C with an appropriate antibacterial agent. Avoid freeze-thaw cycles.
<b>Expiry Date:</b>	12 months after purchase

---

FOR RESEARCH USE ONLY



**Rabbit polyclonal antibody to EAAT1/GLAST1 (516-531):  
Affinity purified**



Western Blot using rabbit polyclonal antibody to EAAT1/GLAST1 on rat pancreas lysate (1µg/ml).

biosensis

---

FOR RESEARCH USE ONLY