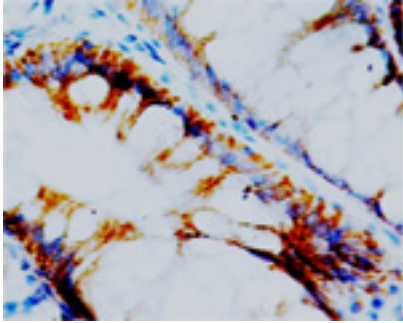


Rabbit polyclonal antibody to human Neuropeptide Y Receptor Y1 (335-349): Affinity purified

Catalogue No.:	R-1015-100
Description:	THIS PRODUCT HAS BEEN SUPERCEDED. PLEASE REFER TO THE "REPLACED BY" FIELD BELOW TO LOCATE THE CURRENT BIOSENSIS PRODUCT TO MEET YOUR RESEARCH NEEDS. Neuropeptide Y receptor Y1 (NPY1R) is a multi-pass membrane protein belonging to the G-protein coupled receptor 1 family. NPY1R is a receptor for Y1, one of two major subtypes of Neuropeptide Y (NPY). NPY1R has been identified in a variety of tissues, including brain, spleen, small intestine, kidney and heart muscle.
Batch No.:	See product label
Unit size:	100 µg
Antigen:	A synthetic peptide (FNFCDFRSRDDDYET) corresponding to a region (335-349) from the C-terminus of human Neuropeptide Y Receptor Y1 (NPY1R).
Other Names:	NPY1-R; NPYY1; NPYR;
Accession:	P25929 NPY1R_HUMAN; Q04573 NPY1R_MOUSE;
Produced in:	Rabbit
Purity:	Affinity purified on antigen column
Applications:	Immunohistochemistry (IHC) and Western Blotting (WB). A concentration of 0.1-0.5 µg/ml is recommended for WB. A concentration of 0.5-1 µg/ml is recommended to detect NPY1R in formalin fixed and paraffin embedded tissues. Heat mediated antigen retrieval is required. Biosensis recommends optimal dilutions/concentrations should be determined by the end user.
Specificity:	The specificity of this antibody has been confirmed by WB and IHC against the antigen.
Cross-reactivity:	Human; mouse; rat;
Form:	Lyophilised with 5mg BSA, 0.9mg NaCl, 0.2mg Na ₂ HPO ₄ , 0.05mg Thimerosal, 0.05mg NaN ₃
Reconstitution:	Reconstitute in 100 µl of sterile distilled water to achieve an antibody concentration of 1 µg/µl. Centrifuge to remove any insoluble material.
Storage:	At least 12 months after purchase at 2 - 4°C (lyophilized formulations). After reconstitution, aliquot and store at -20°C for a higher stability. Avoid freeze-thaw cycles
Expiry Date:	12 months after purchase

FOR RESEARCH USE ONLY

Rabbit polyclonal antibody to human Neuropeptide Y Receptor Y1 (335-349): Affinity purified



Immunohistochemical staining of paraffin-embedded human intestinal cancer sections using rabbit polyclonal antibody to human Neuropeptide Y Receptor Y1 (1-2 $\mu\text{g/ml}$). Secondary biotinylated goat anti-rabbit IgG antibody (10 $\mu\text{g/ml}$).

biosensis

FOR RESEARCH USE ONLY