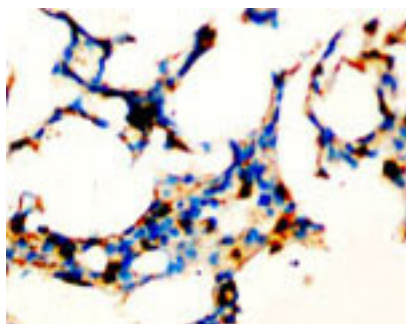




## Rabbit polyclonal antibody to human SOCS1 (197-211): Affinity purified

<b>Catalogue No.:</b>	R-1029-100
<b>Description:</b>	The SOCS (Suppressor of cytokine signaling) family of proteins has at least 8 members; SOCS1 to SOCS7 and CIS (cytokine inducible SH2 containing protein). SOCS1 has a role in the negative regulation of cytokines that signal through the JAK/STAT3 pathway.
<b>Batch No.:</b>	See product label
<b>Unit size:</b>	100 ug
<b>Antigen:</b>	A synthetic peptide (NPVLRDYLSSFPFQI) corresponding to a region (197-211) from the C-terminus of human SOCS1.
<b>Other Names:</b>	Janus kinase binding protein; STAT induced STAT inhibitor 1; SOCS-1; JAK-binding protein; JAB; SSI-1; TIP-3; Tec-interacting protein 3; SSI1; TIP3;
<b>Accession:</b>	O15524 SOCS1_HUMAN;
<b>Produced in:</b>	Rabbit
<b>Purity:</b>	Affinity purified on antigen column
<b>Applications:</b>	Immunohistochemistry (IHC) and Western Blotting (WB). A concentration of 0.1-0.5 ug/mL is recommended for WB. Human SOCS1 has a predicted length of 211 residues and MW of 24 kDa. A concentration of 0.5-1.0 ug/mL is recommended to detect SOCS1 in formalin fixed and paraffin embedded tissues. Heat mediated antigen retrieval is required. Biosensis recommends optimal dilutions/concentrations should be determined by the end user.
<b>Specificity:</b>	The specificity of this antibody has been confirmed by WB and IHC against the antigen.
<b>Cross-reactivity:</b>	Human; rat; predicted to react with mouse due to sequence homology;
<b>Form:</b>	Lyophilised with 5mg BSA, 0.9mg NaCl, 0.2mg Na <sub>2</sub> HPO <sub>4</sub> , 0.05mg Thimerosal, 0.05mg NaN <sub>3</sub>
<b>Reconstitution:</b>	Reconstitute in 100 uL of sterile distilled water to achieve an antibody concentration of 1 mg/mL. Centrifuge to remove any insoluble material.
<b>Storage:</b>	At least 12 months after purchase at 2-8C (lyophilized formulations). After reconstitution, aliquot and store at -20C for a higher stability. Avoid freeze-thaw cycles.
<b>Expiry Date:</b>	12 months after purchase



Immunohistochemical staining of paraffin-embedded rat lung tissue sections using SOCS1 antibody (R-1029-100) at a concentration of 0.5-1.0 µg/ml. Secondary detection with Biotinylated goat anti-rabbit IgG (10 µg/ml).

FOR RESEARCH USE ONLY