



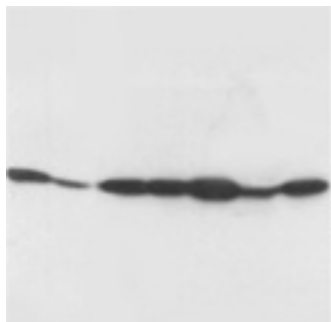
Rabbit polyclonal antibody to human alpha 2a Adrenergic Receptor (414-431) : Affinity purified

Catalogue No.:	R-1034-100
Description:	Alpha 2a Adrenergic Receptors (ADRA2A) are multi-pass membrane proteins that belong to the G-protein coupled receptor 1 family. Their function is to mediate the inhibition of adenylate cyclase through the action of G-proteins.
Batch No.:	See product label
Unit size:	100 ug
Antigen:	A synthetic peptide (FGYCNSLNPVIYTIFNH) corresponding to amino acids 414-431 from human Adrenergic Receptor alpha 2a. To enhance the immunological response, this peptide was coupled to carrier protein BSA.
Other Names:	ADRA2R; ADRAR; Alpha-2A adrenoreceptor; Alpha-2A adrenoceptor; Alpha-2 adrenergic receptor subtype C10; ADRA2A;
Accession:	P08913 ADA2A_HUMAN;
Produced in:	Rabbit
Purity:	Affinity purified on antigen column
Applications:	Immunohistochemistry (IHC) and Western Blotting (WB). A concentration of 0.1-0.5 ug/mL is recommended for WB. Human Adrenergic Receptor alpha 2a has a predicted length of 450 amino acids and MW of 49 kDa. A concentration of 0.5-1.0 ug/mL is recommended to detect the protein in formalin fixed and paraffin embedded tissues. Heat mediated antigen retrieval is recommended. Biosensis recommends optimal dilutions/concentrations should be determined by the end user.
Specificity:	The specificity of this antibody has been confirmed by WB and IHC against the antigen.
Cross-reactivity:	Human; rat; expected to react with mouse due to sequence homology
Form:	Lyophilised with 5mg BSA, 0.9mg NaCl, 0.2mg Na ₂ HPO ₄ , 0.05mg Thimerosal, 0.05mg NaN ₃
Reconstitution:	Reconstitute in 100 uL of sterile distilled water to achieve an antibody concentration of 1 mg/mL. Centrifuge to remove any insoluble material.
Storage:	At least 12 months after purchase at 2-8C (lyophilized formulations). After reconstitution, aliquot and store at -20C for a higher stability. Avoid freeze-thaw cycles
Expiry Date:	12 months after purchase

FOR RESEARCH USE ONLY



Rabbit polyclonal antibody to human alpha 2a Adrenergic Receptor (414-431) : Affinity purified



Western blot using rabbit polyclonal antibody to human alpha 2a Adrenergic Receptor (R-1034-100) at 1 μ g/ml.

Secondary HRP conjugated goat anti-rabbit IgG antibody at 1:3,000-10,000.

Lane 1: Rat testicular tissue lysate

Lane 2: Rat brain tissue lysate

Lane 3: MCF7 whole cell lysate

Lane 4: MM453 whole cell lysate

Lane 5: SMMC whole cell lysate

Lane 6: Hela whole cell lysate

Lane 7: Colo320 whole cell tissue lysate

biosensis

FOR RESEARCH USE ONLY