



## Rabbit polyclonal antibody to human alkaline phosphatase (135-149): Affinity purified

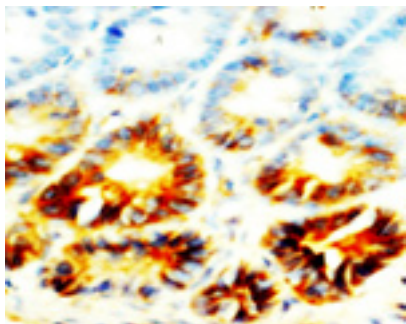
<b>Catalogue No.:</b>	R-1035-100
<b>Description:</b>	Alkaline phosphatase is a hydrolase enzyme responsible for removing phosphate groups from many types of molecules including nucleotides, proteins and alkaloids. There are at least four distinct groups of alkaline phosphatases: intestinal, placental, placental-like and tissue non-specific. The tissue non-specific form is a membrane bound glycosylated protein that is not expressed in any particular tissue.
<b>Batch No.:</b>	See product label
<b>Unit size:</b>	100 ug
<b>Antigen:</b>	A synthetic peptide (ERSRCNTTQGNEVTS) corresponding to the amino acids 135-149 from human alkaline phosphatase. To enhance the immunological response, this peptide was coupled to carrier protein BSA.
<b>Other Names:</b>	Alkaline phosphatase; tissue-nonspecific isozyme; AP-TNAP; TNSALP; ALPL;
<b>Accession:</b>	P05186 PPBT_HUMAN;
<b>Produced in:</b>	Rabbit
<b>Purity:</b>	Affinity purified on antigen column
<b>Applications:</b>	Immunohistochemistry (IHC) and Western Blotting (WB). A concentration of 1.0-2.0 ug/mL is recommended for WB. Human alkaline phosphatase has a predicted length of 524 residues and MW of 57 kDa. A concentration of 1.0-2.0 ug/mL is recommended to detect the protein in formalin fixed and paraffin embedded tissues. Antigen retrieval is required. Biosensis recommends optimal dilutions/concentrations should be determined by the end user.
<b>Specificity:</b>	The specificity of this antibody has been confirmed by WB and IHC against the antigen.
<b>Cross-reactivity:</b>	Human; mouse; rat;
<b>Form:</b>	Lyophilised with 5mg BSA, 0.9mg NaCl, 0.2mg Na <sub>2</sub> HPO <sub>4</sub> , 0.05mg Thimerosal, 0.05mg NaN <sub>3</sub>
<b>Reconstitution:</b>	Reconstitute in 100 uL of sterile distilled water to achieve an antibody concentration of 1 mg/mL. Centrifuge to remove any insoluble material.
<b>Storage:</b>	At least 12 months after purchase at 2-8C (lyophilized formulations). After reconstitution, aliquot and store at -20C for a higher stability. Avoid freeze-thaw cycles.
<b>Expiry Date:</b>	12 months after purchase

---

FOR RESEARCH USE ONLY



## Rabbit polyclonal antibody to human alkaline phosphatase (135-149): Affinity purified



Immunohistochemical staining of paraffin-embedded sections of rat small intestine using rabbit polyclonal antibody to human alkaline phosphatase (R-1035-100) at 1-2  $\mu$ g/ml. Secondary biotinylated goat anti-rabbit IgG antibody at 10  $\mu$ g/ml.

biosensis

---

FOR RESEARCH USE ONLY