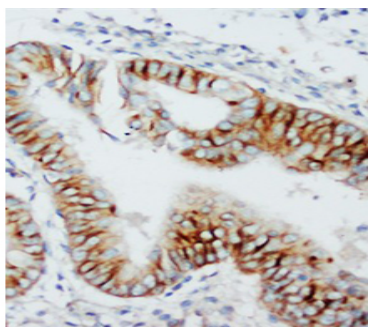


Rabbit polyclonal antibody to human C-C Chemokine Receptor type 5 (19-34): Affinity purified

Catalogue No.:	R-1043-100
Description:	C-C Chemokine Receptor type 5 (CCR5) is a G-protein coupled receptor for a number of inflammatory CC-chemokines including MIP-1-alpha, MIP-1-beta and RANTES. CCR5 and its ligands may also play important roles in the control of granulocytic lineage proliferation or differentiation as well as pathogenesis of viruses such as HIV.
Batch No.:	See product label
Unit size:	100 ug
Antigen:	A synthetic peptide (PCQKINVKQIAARLLP) corresponding to a region (19-34) from the N-terminus of human C-C Chemokine Receptor type 5. To enhance the immunological response, this peptide was coupled to carrier protein BSA.
Other Names:	C-C CKR-5; CC-CKR-5; CCR-5; CCR5; HIV-1 fusion coreceptor; CHEMR13; CD195;
Accession:	P51681 CCR5_HUMAN;
Produced in:	Rabbit
Purity:	Affinity purified on antigen column
Applications:	Immunohistochemistry (IHC) and Western Blotting (WB). A concentration of 0.1-0.5 ug/mL is recommended for WB. Human CCR5 has a predicted length of 352 residues and MW of 41 kDa. A concentration of 0.5-1 ug/mL is recommended to detect the protein in formalin fixed and paraffin embedded tissues. Heat mediated antigen retrieval is recommended. Biosensis recommends optimal dilutions/concentrations should be determined by the end user.
Specificity:	The specificity of this antibody has been confirmed by WB and IHC against the antigen.
Cross-reactivity:	Human; expected to react with rat and mouse due to sequence homology
Form:	Lyophilised with 5mg BSA, 0.9mg NaCl, 0.2mg Na ₂ HPO ₄ , 0.05mg Thimerosal, 0.05mg NaN ₃
Reconstitution:	Reconstitute in 100 uL of sterile distilled water to achieve an antibody concentration of 1 mg/mL. Centrifuge to remove any insoluble material.
Storage:	At least 12 months after purchase at 2-8C (lyophilized formulations). After reconstitution, aliquot and store at -20C for a higher stability. Avoid freeze-thaw cycles
Expiry Date:	12 months after purchase



Immunohistochemical staining with Rabbit polyclonal antibody to human C-C Chemokine Receptor type 5 (R-1043-100) at 2 µg/ml in Human Rectal Cancer Tissue. Secondary biotin conjugated goat anti-rabbit IgG antibody at 10 µg/ml.

FOR RESEARCH USE ONLY