



## Rabbit polyclonal antibody to human FGF-2 (188-210): Affinity purified

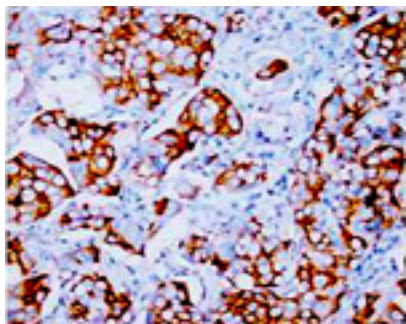
<b>Catalogue No.:</b>	R-1019-100
<b>Description:</b>	THIS PRODUCT IS TEMPORARILY OUT OF STOCK. PLEASE REFER TO THE "REPLACED BY" FIELD BELOW TO LOCATE THE CURRENT BIOSENSIS PRODUCT TO MEET YOUR RESEARCH NEEDS. Fibroblast growth factors (FGFs) bind heparin and exhibit widespread mitogenic and neurotrophic activities in a variety of different cells including mesenchymal, neuroectodermal and endothelial cells. FGF-2 has been implicated in diverse biological processes such as limb and nervous system development, wound healing and tumour growth. There are at least 3 isoforms of FGF-2 arising from alternative initiation.
<b>Batch No.:</b>	See product label
<b>Unit size:</b>	100 ug
<b>Antigen:</b>	A synthetic peptide corresponding to a region (188-210) from human FGF-2. To enhance the immunological response, this peptide was coupled to carrier protein BSA.
<b>Other Names:</b>	Heparin-binding growth factor 2; HBGF-2; Basic fibroblast growth factor; FGFB; bFGF; Prostatropin; FGF2;
<b>Accession:</b>	P09038 FGF2_HUMAN;
<b>Produced in:</b>	Rabbit
<b>Purity:</b>	Affinity purified on antigen column
<b>Applications:</b>	Immunohistochemistry (IHC) and Western Blotting (WB). A concentration of 1.0 ug/mL is recommended for WB. Human FGF-2 (isoform 1) has a predicted length of 210 amino acids and MW of 23 kDa. A concentration of 1.0 ug/mL is recommended to detect the protein in formalin fixed and paraffin embedded tissues. Heat mediated antigen retrieval is required. Biosensis recommends optimal dilutions/concentrations should be determined by the end user.
<b>Specificity:</b>	The specificity of this antibody has been confirmed by WB and IHC against the antigen.
<b>Cross-reactivity:</b>	Human; rat;
<b>Form:</b>	Lyophilised with 5mg BSA, 0.9mg NaCl, 0.2mg Na <sub>2</sub> HPO <sub>4</sub> , 0.05mg Thimerosal, 0.05mg Na <sub>3</sub>
<b>Reconstitution:</b>	Reconstitute in 100 uL of sterile distilled water to achieve an antibody concentration of 1 mg/mL. Centrifuge to remove any insoluble material.
<b>Storage:</b>	At least 12 months after purchase at 2-8C (lyophilized formulations). After reconstitution, aliquot and store at -20C for a higher stability. Avoid freeze-thaw cycles.
<b>Expiry Date:</b>	12 months after purchase

---

FOR RESEARCH USE ONLY



## Rabbit polyclonal antibody to human FGF-2 (188-210): Affinity purified



Immunohistochemical staining of rabbit polyclonal antibody to human FGF-2 at 1-2  $\mu\text{g/ml}$  in paraffin-embedded human mammary cancer sections. Biotinylated goat anti-rabbit IgG secondary antibody at 10  $\mu\text{g/ml}$ .

biosensis

---

FOR RESEARCH USE ONLY