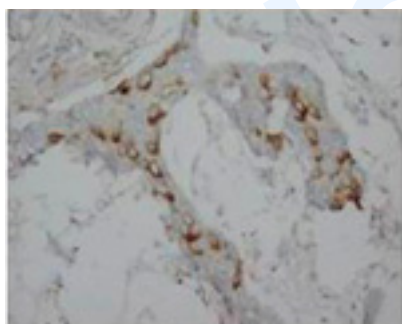


## Rabbit polyclonal antibody to human Calretinin (4-18): Affinity purified

<b>Catalogue No.:</b>	R-1042-100
<b>Description:</b>	Calretinin, also known as Calbindin 2, belongs to the calbindin family of proteins. It has six EF-hand domains which bind calcium.
<b>Batch No.:</b>	See product label
<b>Unit size:</b>	100 ug
<b>Antigen:</b>	A synthetic peptide (PQQQPPYLHLAELTA) corresponding to a region (4-18) at the N-terminus from human Calretinin.
<b>Other Names:</b>	CR; CALB2; CAB29; Calbindin 2;
<b>Accession:</b>	P22676 CALB2_HUMAN;
<b>Produced in:</b>	Rabbit
<b>Applications:</b>	Immunohistochemistry (IHC) and Western Blotting (WB). A concentration of 0.1-0.5 ug/mL is recommended for WB. Human calretinin has a predicted length of 271 residues and MW of 32 kDa. A concentration of 0.5-1.0 ug/mL is recommended to detect the protein in paraffin embedded tissues. Antigen retrieval by heat is required. Biosensis recommends optimal dilutions/concentrations should be determined by the end user.
<b>Specificity:</b>	The specificity of this antibody has been confirmed by WB and IHC against the antigen.
<b>Cross-reactivity:</b>	Human; mouse; rat;
<b>Form:</b>	Liquid (0.5ml). 50% glycerol, 0.9% NaCl, 0.2% Na <sub>2</sub> HPO <sub>4</sub> , 0.02% NaN <sub>3</sub> .
<b>Storage:</b>	At least 12 months after purchase at -20°C. Avoid freeze-thaw cycles.
<b>Expiry Date:</b>	12 months after purchase



Immunohistochemical staining with rabbit polyclonal antibody to human Calretinin (R-1042-100) in paraffin-embedded human mammary cancer sections at 1-2 ug/ml. Secondary biotinylated goat anti-rabbit IgG antibody at 10 ug/ml.

---

FOR RESEARCH USE ONLY