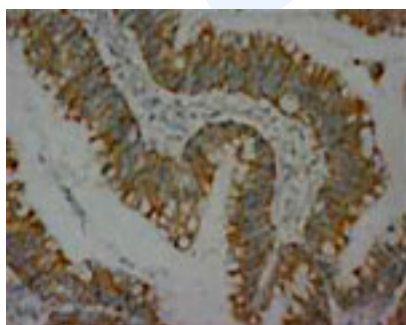


Rabbit polyclonal antibody to Heat Shock Protein 60 (384-401): Affinity purified

Catalogue No.:	R-1065-100
Description:	Heat Shock Protein 60 (HSP60) is a chaperonin with roles in mitochondrial protein import and folding of polypeptides in the mitochondrial matrix.
Batch No.:	See product label
Unit size:	100 ug
Antigen:	A synthetic peptide (EYEKEKLNERLAKLSDGV) corresponding to a region (384-401) from human Heat Shock Protein 60 (HSP60). To enhance the immunological response, this peptide was coupled to carrier protein BSA.
Other Names:	Heat shock protein 60; HSP-60; Hsp60; 60 kDa chaperonin; Chaperonin 60; CPN60; Mitochondrial matrix protein P1; P60 lymphocyte protein; HuCHA60; HSPD1; HSP60;
Accession:	P10809 CH60_HUMAN;
Produced in:	Rabbit
Purity:	Affinity purified on antigen column
Applications:	Immunohistochemistry (IHC) and Western Blotting (WB). A concentration of 0.5-1.0 ug/mL is recommended for WB. Human HSP60 has a predicted length of 573 residues and MW of 61 kDa. A concentration of 0.5-1.0 ug/mL is recommended to detect the protein in formalin fixed and paraffin embedded tissues. Antigen retrieval is required. Biosensis recommends optimal dilutions/concentrations should be determined by the end user.
Specificity:	The specificity of this antibody has been confirmed by WB and IHC against the antigen.
Cross-reactivity:	Human; mouse; rat; rabbit;
Form:	Liquid (0.5ml). 50% glycerol, 0.9mg NaCl and 0.2mg Na ₂ HPO ₄
Reconstitution:	The liquid formulation should be diluted in PBS (pH 7.4)
Storage:	After reconstitution, aliquot and store at -20C for a higher stability. Avoid freeze-thaw cycles
Expiry Date:	12 months after purchase



Immunohistochemical staining of paraffin-embedded human intestinal cancer sections using Heat Shock Protein 60 (R-1065-100) at a concentration of 0.5-1.0 µg/ml. Secondary detection using Biotinylated goat anti-rabbit IgG (10 µg/ml).

FOR RESEARCH USE ONLY