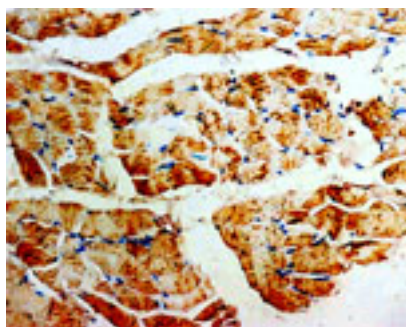


Rabbit polyclonal antibody to human phosphomevalonate kinase (135-151): Affinity purified

Catalogue No.:	R-1078-100
Description:	The enzyme phosphomevalonate kinase (PMVK) catalyzes the conversion of 5-phosphomevalonate into 5-diphosphomevalonate in the cholesterol biosynthetic pathway. PMVK is found in the peroxisome of heart, liver, skeletal muscle, kidney and pancreas tissue with lower levels in brain, placenta and lung.
Batch No.:	See product label
Unit size:	100 ug
Antigen:	A synthetic peptide (EQSRQQRGWVFTPGVDD) corresponding to a region (135-151) from human phosphomevalonate kinase (PMVK). To enhance the immunological response, this peptide was coupled to carrier protein BSA.
Other Names:	Phosphomevalonate kinase; PMKase; EC 2.7.4.2; PMVK; PMKI;
Accession:	Q15126 PMVK_HUMAN;
Produced in:	Rabbit
Purity:	Affinity purified on antigen column
Applications:	Immunohistochemistry (IHC) and Western Blotting (WB). A concentration of 1.0-2.0 ug/mL is recommended for WB. Human phosphomevalonate kinase has a predicted length of 192 residues and MW of 22 kDa. A concentration of 1.0-2.0 ug/mL is recommended to detect the protein in formalin fixed and paraffin embedded tissues. Biosensis recommends optimal dilutions/concentrations should be determined by the end user.
Specificity:	The specificity of this antibody has been confirmed by WB and IHC against the antigen.
Cross-reactivity:	Human; mouse; rat;
Form:	Lyophilised with 5mg BSA, 0.9mg NaCl, 0.2mg Na ₂ HPO ₄ , 0.05mg Thimerosal, 0.05mg NaN ₃
Reconstitution:	Reconstitute in 100 uL of sterile distilled water to achieve an antibody concentration of 1 mg/mL. Centrifuge to remove any insoluble material.
Storage:	At least 12 months after purchase at 2-8C (lyophilized formulations). After reconstitution, aliquot and store at -20C for a higher stability. Avoid freeze-thaw cycles
Expiry Date:	12 months after purchase



Immunohistochemical staining of rabbit polyclonal antibody to human phosphomevalonate kinase at 1-2 μ g/ml in paraffin-embedded sections of rat skeletal muscle. Secondary biotinylated goat anti-rabbit IgG antibody at 10 μ g/ml.

FOR RESEARCH USE ONLY