



## Rabbit polyclonal antibody to human Sonic Hedgehog protein (34-50): Affinity purified

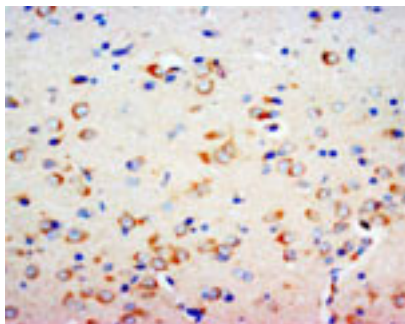
<b>Catalogue No.:</b>	R-1082-100
<b>Description:</b>	Sonic Hedgehog protein (SHH) is essential for a variety of patterning events during embryo development. SHH is expressed in fetal intestine, liver, lung, and kidney. The SHH precursor protein is autocatalytically cleaved into two products. The C-terminal portion is involved in the proteolysis of the precursor and cholesterol transferase activity. The N-terminal portion contains signalling activity.
<b>Batch No.:</b>	See product label
<b>Unit size:</b>	100 ug
<b>Antigen:</b>	A synthetic peptide (RHPKKLTPLAYKQFIPN) corresponding to a region (34-50) from human Sonic Hedgehog protein (SHH). To enhance the immunological response, this peptide was coupled to carrier protein BSA.
<b>Other Names:</b>	SHH; HHG-1;
<b>Accession:</b>	Q15465 SHH_HUMAN;
<b>Produced in:</b>	Rabbit
<b>Purity:</b>	Affinity purified on antigen column
<b>Applications:</b>	Immunohistochemistry (IHC) and Western Blotting (WB). A concentration of 1.0-2.0 ug/mL is recommended for WB. Human Sonic Hedgehog protein (precursor) has a predicted length of 462 amino acids and MW of 50 kDa. A concentration of 1.0-2.0 ug/mL is recommended to detect the protein in formalin fixed and paraffin embedded tissues. Biosensis recommends optimal dilutions/concentrations should be determined by the end user.
<b>Specificity:</b>	The specificity of this antibody has been confirmed by WB and IHC against the antigen.
<b>Cross-reactivity:</b>	Human; mouse; rat; rabbit;
<b>Form:</b>	Lyophilised with 5mg BSA, 0.9mg NaCl, 0.2mg Na <sub>2</sub> HPO <sub>4</sub> , 0.05mg Thimerosal, 0.05mg NaN <sub>3</sub>
<b>Reconstitution:</b>	Reconstitute in 100 uL of sterile distilled water to achieve an antibody concentration of 1 mg/mL. Centrifuge to remove any insoluble material.
<b>Storage:</b>	At least 12 months after purchase at 2-8C (lyophilized formulations). After reconstitution, aliquot and store at -20C for a higher stability. Avoid freeze-thaw cycles
<b>Expiry Date:</b>	12 months after purchase

---

FOR RESEARCH USE ONLY



## Rabbit polyclonal antibody to human Sonic Hedgehog protein (34-50): Affinity purified



Immunohistochemical detection of SHH in paraffin-embedded rat brain tissue sections using Rabbit polyclonal antibody to Sonic Hedgehog protein (R-1082-100) at 1.0-2.0  $\mu\text{g/ml}$ . Secondary antibody was biotinylated goat anti-rabbit at a concentration of 10.0  $\mu\text{g/ml}$ .

biosensis

---

FOR RESEARCH USE ONLY