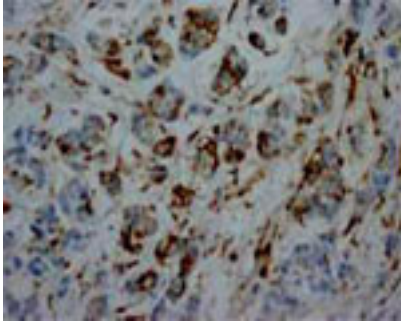


Rabbit polyclonal antibody to human Heat Shock Protein beta-1 (180-194): Affinity purified

Catalogue No.:	R-1085-100
Description:	THIS PRODUCT IS TEMPORARILY OUT OF STOCK. PLEASE REFER TO THE "REPLACED BY" FIELD BELOW TO LOCATE THE CURRENT BIOSENSIS PRODUCT TO MEET YOUR RESEARCH NEEDS. Heat shock protein beta-1 (HSPB1) belongs to the small heat shock protein (HSP20) family. HSPB1 is expressed in response to heat shock and is also activated by estrogen in hormone responsive cells. HSPB1 is expressed in most cells with highest expression in heart and in tissues composed of striated and smooth muscle.
Batch No.:	See product label
Unit size:	100 ug
Antigen:	A synthetic peptide (TIPVTFESRAQLGGP) corresponding to a region (180-194) from human Heat shock protein beta-1. To enhance the immunological response, this peptide was coupled to carrier protein BSA.
Other Names:	Heat shock protein beta-1; HspB1; Heat shock 27; HSP 27; Stress-responsive protein 27; SRP27; Estrogen-regulated 24 kDa protein; 28 kDa heat shock protein; HSPB1; HSP27; HSP28;
Accession:	P04792 HSPB1_HUMAN;
Produced in:	Rabbit
Purity:	Affinity purified on antigen column
Applications:	Immunohistochemistry (IHC) and Western Blotting (WB). A concentration of 0.1-0.5 ug/mL is recommended for WB. Human HSPB1 has a predicted length of 205 residues and MW of 23 kDa. A concentration of 0.5-1.0 ug/mL is recommended to detect the protein in formalin fixed and paraffin embedded tissues. Heat mediated antigen retrieval is required. Biosensis recommends optimal dilutions/concentrations should be determined by the end user.
Specificity:	The specificity of this antibody has been confirmed by WB and IHC against the antigen.
Cross-reactivity:	Human; expected to react with rat and mouse due to sequence homology
Form:	Liquid (0.5ml). 50% glycerol, 0.9mg NaCl and 0.2mg Na ₂ HPO ₄
Reconstitution:	The liquid formulation should be diluted in PBS (pH 7.4)
Storage:	After reconstitution, aliquot and store at -20C for a higher stability. Avoid freeze-thaw cycles
Expiry Date:	12 months after purchase

FOR RESEARCH USE ONLY

Rabbit polyclonal antibody to human Heat Shock Protein beta-1 (180-194): Affinity purified



Immunohistochemical staining of paraffin-embedded human mammary cancer sections using Heat shock protein beta-1 antibody (R-1085-100) at a concentration of 1-2 μ g/ml. Secondary detection with Biotinylated goat anti-rabbit IgG (10 μ g/ml).

biosensis

FOR RESEARCH USE ONLY