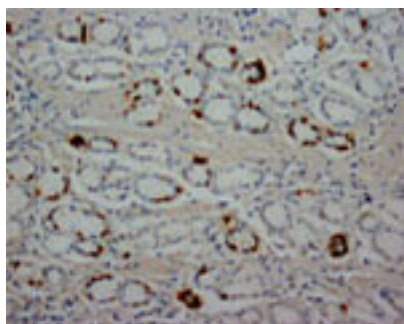


Rabbit polyclonal antibody to human STAT1 alpha (718-733): Affinity purified

Catalogue No.:	R-1103-100
Description:	STAT1 belongs to the STAT (signal transducers and activators of transcription) family of proteins. STAT proteins undergo tyrosine/serine phosphorylation in response to cytokines and growth factors. As a result of this phosphorylation, STAT proteins form dimers and are translocated to the nucleus where they act as transcription factors. Alternative splicing of the STAT1 gene gives rise to the STAT1 alpha and beta isoforms.
Batch No.:	See product label
Unit size:	100 ug
Antigen:	A synthetic peptide (QTTDNLPMSPPEEFDE) corresponding to a region (718-733) from the C-terminus of human STAT1 isoform alpha/p91. To enhance the immunological response, this peptide was coupled to carrier protein BSA.
Other Names:	Transcription factor ISGF-3 components p91/p84; STAT1; p91;
Accession:	P42224 STAT1_HUMAN;
Produced in:	Rabbit
Purity:	Affinity purified on antigen column
Applications:	Immunohistochemistry (IHC) and Western Blotting (WB). A concentration of 1.0-2.0 ug/mL is recommended for WB. Human STAT1 (isoform alpha/p91) has a predicted length of 750 residues and MW of 87 kDa. A concentration of 1.0-2.0 ug/mL is recommended to detect the protein in formalin fixed and paraffin embedded tissues. Antigen retrieval is required. Biosensis recommends optimal dilutions/concentrations should be determined by the end user.
Specificity:	The specificity of this antibody has been confirmed by WB and IHC against the antigen.
Cross-reactivity:	Human; mouse; rat; rabbit;
Form:	Liquid (0.5ml). 50% glycerol, 0.9mg NaCl and 0.2mg Na ₂ HPO ₄
Reconstitution:	The liquid formulation should be diluted in PBS (pH 7.4)
Storage:	At least 12 months after purchase at 2-8C (lyophilized formulations). After reconstitution, aliquot and store at -20C for a higher stability. Avoid freeze-thaw cycles
Expiry Date:	12 months after purchase



Immunohistochemical staining of paraffin-embedded human carcinoma ventriculi sections using STAT1 antibody (R-1103-100) at a concentration of 1.0-2.0 µg/ml. Secondary detection using biotinylated goat anti-rabbit IgG (10 µg/ml).

FOR RESEARCH USE ONLY