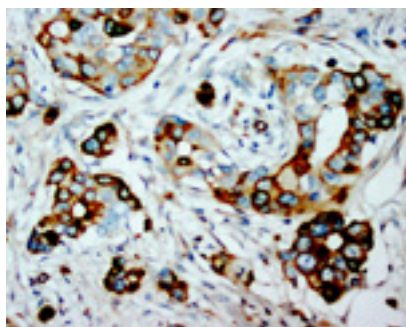




Rabbit polyclonal antibody to human S-phase kinase-associated protein 2 (2-20): Affinity purified

| | |
|--------------------------|---|
| Catalogue No.: | R-1102-100 |
| Description: | S-phase kinase-associated protein 2 (SKP2) is a subunit in the SKP1-CUL1-F-box protein E3 ubiquitin protein ligase complex. This complex mediates the ubiquitination and the subsequent degradation of proteins involved in cell cycle progression, signal transduction and transcription. |
| Batch No.: | See product label |
| Unit size: | 100 ug |
| Antigen: | A synthetic peptide (HRKHLQEIPDLSSNVATSF) corresponding to a region (2-20) from the N-terminus of human S-phase kinase-associated protein 2. To enhance the immunological response, this peptide was coupled to carrier protein BSA. |
| Other Names: | F-box protein Skp2; Cyclin A/CDK2-associated protein p45; p45skp2; F-box/LRR-repeat protein 1; SKP2; FBXL1; |
| Accession: | Q13309 SKP2_HUMAN; |
| Produced in: | Rabbit |
| Purity: | Affinity purified on antigen column |
| Applications: | Immunohistochemistry (IHC) and Western Blotting (WB). A concentration of 1.0 ug/mL is recommended for WB. Human SKP2 (Isoform SKP2_alpha) has a predicted length of 424 residues and MW of 48 kDa. A concentration of 1.0-2.0 ug/mL is recommended to detect the protein in formalin fixed and paraffin embedded tissues. Biosensis recommends optimal dilutions/concentrations should be determined by the end user. |
| Specificity: | The specificity of this antibody has been confirmed by WB and IHC against the antigen. |
| Cross-reactivity: | Human; mouse; rat; |
| Form: | Lyophilised with 5mg BSA, 0.9mg NaCl, 0.2mg Na ₂ HPO ₄ , 0.05mg Thimerosal, 0.05mg NaN ₃ |
| Reconstitution: | Reconstitute in 100 uL of sterile distilled water to achieve an antibody concentration of 1 mg/mL. Centrifuge to remove any insoluble material. |
| Storage: | At least 12 months after purchase at 2-8C (lyophilized formulations). After reconstitution, aliquot and store at -20C for a higher stability. Avoid freeze-thaw cycles |
| Expiry Date: | 12 months after purchase |



Immunohistochemical staining of paraffin-embedded human mammary cancer sections using rabbit polyclonal antibody to human S-phase kinase-associated protein 2 (1-2 µg/ml). Secondary biotinylated goat anti-rabbit IgG antibody (10 µg/ml).

FOR RESEARCH USE ONLY