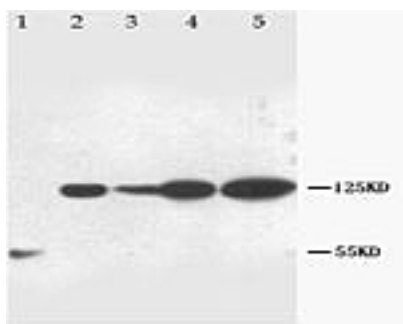




Rabbit polyclonal antibody to human Notch 1 (1601-1619): Affinity purified

Catalogue No.:	R-1128-100
Description:	Notch 1 is initially synthesized as inactive precursor molecule. During maturation, the molecule is cleaved at its extracellular domain. Upon binding to a ligand such as Delta1, a C-terminal Notch 1 fragment is released and further cleaved. The resulting activated cytosolic fragment translocates to the nucleus where it activates transcription. Notch 1 is mostly found in fetal spleen, brain stem and lung tissues and adult lymphoid tissues.
Batch No.:	See product label
Unit size:	100 ug
Antigen:	A synthetic peptide (HTNVVFKRDAHGQQMIFPY) corresponding to a region (1601-1619) from human Notch 1 (precursor). To enhance the immunological response, this peptide was coupled to carrier protein BSA.
Other Names:	Neurogenic locus notch homolog protein 1; Notch 1; hN1; Translocation-associated notch protein TAN-1; NOTCH1; TAN1;
Accession:	P46531 NOTC1_HUMAN;
Produced in:	Rabbit
Purity:	Affinity purified on antigen column
Applications:	Western Blotting (WB). A concentration of 1.0 ug/mL is recommended for WB. Human Notch 1 (precursor) has a predicted length of 2,555 residues and MW of 273 kDa. Biosensis recommends optimal dilutions/concentrations should be determined by the end user.
Specificity:	The specificity of this antibody has been confirmed by WB against the antigen.
Cross-reactivity:	Human;
Form:	Lyophilised with 5mg BSA, 0.9mg NaCl, 0.2mg Na ₂ HPO ₄ , 0.05mg Thimerosal, 0.05mg NaN ₃
Reconstitution:	Reconstitute in 100 uL of sterile distilled water to achieve an antibody concentration of 1 mg/mL. Centrifuge to remove any insoluble material.
Storage:	At least 12 months after purchase at 2-8C (lyophilized formulations). After reconstitution, aliquot and store at -20C for a higher stability. Avoid freeze-thaw cycles.
Expiry Date:	12 months after purchase



Western blot using Notch 1 antibody R-1128-100 at 1µg/ml in MCF7 whole cell lysate (lane 2), HeLa whole cell lysate (lane 3), Jurkat whole cell lysate (lane 4) and Colo 320 Whole cell lysate (lane 5). Secondary antibody HRP conjugated goat anti-rabbit IgG at 1:3000-10000 dilution.

FOR RESEARCH USE ONLY