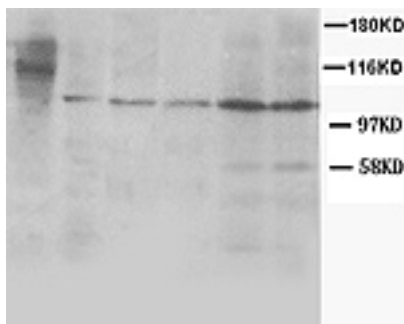




## Rabbit polyclonal antibody to human Cullin-4B (877-895): Affinity purified

<b>Catalogue No.:</b>	R-1141-100
<b>Description:</b>	Cullin-4B is a core component of E3 ubiquitin-protein ligase complexes which mediate the ubiquitination and subsequent proteasomal degradation of specific proteins in the cell.
<b>Batch No.:</b>	See product label
<b>Unit size:</b>	100 ug
<b>Antigen:</b>	A synthetic peptide (DRDYMERDKENPNQYNYIA) corresponding to a region (877-895) from the C-terminus of human Cullin-4B. To enhance the immunological response, this peptide was coupled to carrier protein BSA.
<b>Other Names:</b>	CUL-4B; CUL4B; KIAA0695;
<b>Accession:</b>	Q13620 CUL4B_HUMAN;
<b>Produced in:</b>	Rabbit
<b>Purity:</b>	Affinity purified on antigen column
<b>Applications:</b>	Western Blotting (WB) and Immunohistochemistry (IHC). A concentration of 1.0 ug/mL is recommended for WB. Human Cullin-4B (isoform 1) has a predicted length of 895 residues and MW of 102 kDa. A concentration of 2.0 ug/mL is recommended for IHC in Zebra fish. Heat mediated antigen retrieval is recommended. Biosensis recommends optimal dilutions/concentrations should be determined by the end user.
<b>Specificity:</b>	The specificity of this antibody has been confirmed by WB and IHC against the antigen.
<b>Cross-reactivity:</b>	Zebrafish; Human; Rat;
<b>Form:</b>	Lyophilised with 5mg BSA, 0.9mg NaCl, 0.2mg Na <sub>2</sub> HPO <sub>4</sub> , 0.05mg Thimerosal, 0.05mg NaN <sub>3</sub>
<b>Reconstitution:</b>	Reconstitute in 100 uL of sterile distilled water to achieve an antibody concentration of 1 mg/mL. Centrifuge to remove any insoluble material.
<b>Storage:</b>	At least 12 months after purchase at 2-8C (lyophilized formulations). After reconstitution, aliquot and store at -20C for a higher stability. Avoid freeze-thaw cycles.
<b>Expiry Date:</b>	12 months after purchase



Western blot analysis of rabbit polyclonal antibody to human Cullin-4B at 1µg/ml: Lane 1: Zebra fish tissue lysate Lane 2: MM453 whole cell lysate Lane 3: Rat liver tissue lysate Lane 4: Rat lung tissue lysate Lane 5: MCF7 whole cell lysate Lane 6: MM231 whole cell lysate Secondary HRP conjugated goat anti-rabbit IgG antibody (working dilution: 1:3000-10000).

FOR RESEARCH USE ONLY