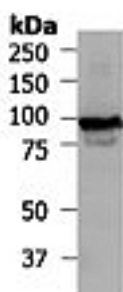


Sheep polyclonal antibody to Catenin beta (771-781): Affinity purified

Catalogue No.:	S-1234-100
Description:	Catenin beta is an adherens junction protein and has a role in the regulation of cell adhesion and in signal transduction through the Wnt pathway. At least 2 isoforms are produced by alternative splicing.
Batch No.:	See product label
Unit size:	100 ug
Antigen:	A synthetic peptide (C-SNQLAWFDL) corresponding to the amino acid region 771-781 of human Catenin beta coupled to carrier protein KLH.
Other Names:	Catenin beta-1; Beta-catenin; CTNNB1; CTNNB; _-Catenin;
Accession:	P35222 CTNB1_HUMAN;
Produced in:	Sheep
Purity:	Affinity purified
Applications:	Western Blotting (WB) and Immunoprecipitation. A concentration of 1.0 ug/mL is recommended for WB. Human Catenin beta (isoform 1) has a predicted length of 781 residues and MW of 86 kDa. A concentration of 5 ug/500 ug of lysate is recommended for immunoprecipitation. Biosensis recommends optimal dilutions/concentrations should be determined by the end user.
Specificity:	The specificity of this antibody has been confirmed by WB against the antigen. This antibody was also validated for immunoprecipitation in rat liver lysate (data not shown).
Cross-reactivity:	Human; mouse; rat;
Form:	Lyophilised from 10 mM sodium HEPES (pH 7.5), 150 mM NaCl, and 0.05 % sodium azide.
Reconstitution:	Reconstitute in 100 uL of sterile water. Centrifuge to remove any insoluble material.
Storage:	At least 12 months after purchase at 2-8C (lyophilized formulations). After reconstitution, aliquot and store at -20C for a higher stability. Avoid freeze-thaw cycles.
Expiry Date:	12 months after purchase



Western blot analysis of Catenin beta (S-1234-100) in extracts from HT29 cells.

FOR RESEARCH USE ONLY