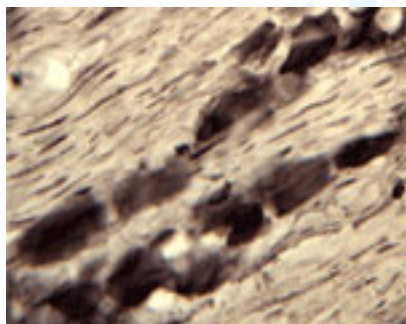


Rabbit antibody to human ATPase (195-209): whole serum

Catalogue No.:	R-072-100
Description:	CATALYTIC ACTIVITY: ATP + H ₂ O = ADP + phosphate. SUBCELLULAR LOCATION: Membrane; multi-pass membrane protein (By similarity). ALTERNATIVE PRODUCTS: 2 named isoforms produced by alternative splicing. SIMILARITY: Belongs to the cation transport ATPase (P-type) family. Type V subfamily.
Batch No.:	See product label
Unit size:	100 uL
Antigen:	A synthetic peptide (C-DDVHRSRHGLSLQDQ) as part of human ATP13A2 protein (aa: 195-209) conjugated to KLH
Other Names:	Probable cation-transporting ATPase 13A2; EC 3.6.3.-; ATP13A2
Accession:	ATPase_HUMAN
Produced in:	Rabbit
Purity:	Whole serum
Applications:	IHC. A dilution of 1:500 to 1:2000 is recommended for this application. Biosensis recommends optimal dilutions/concentrations should be determined by the end user.
Specificity:	Immunohistochemistry shows specific staining for ATPase.
Cross-reactivity:	This antiserum is known to react with rat ATPase. Other species have not yet tested.
Form:	Lyophilised
Reconstitution:	Reconstitute in 100 uL of sterile water. Centrifuge to remove any insoluble material.
Storage:	After reconstitution keep aliquots at -20C for a higher stability, and at 2-8C with an appropriate antibacterial agent. Glycerol (1:1) may be added for an additional stability. Avoid repetitive freeze/thaw cycles.



IHC on rat trigeminal nerve (free floating cryo section) using Rabbit antibody to human ATPase (195-209): whole serum (R-072-100) at a dilution of 1: 2000.

FOR RESEARCH USE ONLY