



Mouse NT3 ELISA Kit (2 plates)

Catalogue No.: BEK-2079-2P

Description: Try our new NT3 Rapid ELISA kit for Human, Rat and Mouse (BEK-2221-2P). Same specificity and sensitivity, but faster!

The mouse NT3 Kit is a sandwich ELISA. The capture antibody is a monoclonal NT3 antibody pre-coated onto the 96-well strip plates provided in the kit. Mouse test samples and standards of known NT3 concentration are added to these wells and allowed to complex with the bound NT3 antibody. A biotinylated NT3 antibody is then added. This detection antibody binds to the antigen thus completing the sandwich. After washing, an enzyme Avidin-Biotin-Peroxidase complex (ABC) is added which binds to the second antibody. The peroxidase substrate TMB is added to induce a coloured reaction product. The intensity of this coloured product is directly proportional to the concentration of NT3 present in the samples. The purpose of this kit is the in-vitro quantitative determination of mouse NT3 in samples such as sera and cell culture supernates. This kit has been configured for research use only and is not to be used in diagnostic or clinical procedures.

Batch No.: See product labels

Antigen: NT3 is a member of the neurotrophin family, that controls survival and differentiation of visceral and proprioceptive sensory neurons. NT3 is closely related to both NGF and BDNF. It may be involved in the maintenance of the adult nervous system, and may affect development of neurons in the embryo when it is expressed in human placenta. NT3-deficient mice generated by gene targeting display severe movement defects of the limbs. The mature peptide of this protein is identical in all mammals examined including human, pig, rat and mouse. SUBCELLULAR LOCATION: Secreted protein. TISSUE SPECIFICITY: Brain and peripheral tissues. SIMILARITY: Belongs to the NGF-beta family.

Other Names: NT-3; NTF3; Neurotrophin-3; HDNF; Nerve growth factor 2; NGF-2;

Accession: P20181 NTF3_MOUSE;

Specificity: Human; Mouse; Rat;

Storage: Store at 4°C

Specific References: Davide D'Amico, Thomas Gener, Maria Martínez de Lagrán, Maria V Sanchez-Vives, Mónica Santos, Mara Dierssen (2016) Infralimbic Neurotrophin-3 Infusion Rescues Fear Extinction Impairment in a Mouse Model of Pathological Fear. *Neuropsychopharmacology*. [Epub ahead of print] doi:10.1016/j.neulet.2015.12.016.

Sandra Petzold, Babette Sommer, Andrea Kröber, Robert Nitsch, Herbert Schwegler, Johannes Vogt, Thomas Roskoden (2015) NT-3 protein levels are enhanced in the hippocampus of PRG1-deficient mice but remain unchanged in PRG1/LPA2 double mutants.

FOR RESEARCH USE ONLY



Mouse NT3 ELISA Kit (2 plates)

Neuroscience Letters. 612:145-8 doi:10.1016/j.neulet.2015.12.016.

Kit components: The ELISA kit box contains 2 x 96 pre-coated strip plates, protein standards, detection reagents, substrate buffer and precise instructions.

Range: 15.6 pg/ml - 1,000 pg/ml

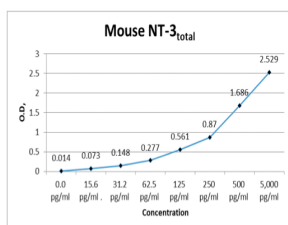
Sensitivity: < 2 pg/ml

Kit protocol: Please refer to our online product listing for current protocol/MSDS versions.

IX: Typical Standard Curve (for reference only, not to be used for actual data)

Concentration pg/ml	0.0 pg/ml	15.6 pg/ml	31.2 pg/ml	62.5 pg/ml	125 pg/ml	250 pg/ml	500 pg/ml	5,000 pg/ml
O.D.	0.014	0.073	0.148	0.277	0.561	0.870	1.686	2.529

This standard curve is for demonstration purposes only. A standard curve should be generated for each assay.



FOR RESEARCH USE ONLY