



## Human Soluble E-Selectin (sE-Selectin) ELISA Kit (2 plates)

<b>Catalogue No.:</b>	BEK-2089-2P
<b>Description:</b>	The human E-Selectin Kit is a sandwich ELISA. The capture antibody is a monoclonal human E-Selectin antibody pre-coated onto the 96-well strip plates provided in the kit. Human test samples and standards of known E-Selectin concentration are added to these wells and allowed to complex with the bound E-Selectin antibody. A biotinylated human E-Selectin antibody is then added. This detection antibody binds to the antigen thus completing the sandwich. After washing, an enzyme Avidin-Biotin-Peroxidase complex (ABC) is added which binds to the second antibody. The peroxidase substrate TMB is added to induce a coloured reaction product. The intensity of this coloured product is directly proportional to the concentration of E-Selectin present in the samples. The purpose of this kit is the in-vitro quantitative determination of human E-Selectin in samples such as sera, plasma, tissue lysates and cell culture supernates. This kit has been configured for research use only and is not to be used in diagnostic or clinical procedures.
<b>Batch No.:</b>	See product labels
<b>Other Names:</b>	CD62 antigen-like family member E; Endothelial leukocyte adhesion molecule 1; ELAM-1; Leukocyte-endothelial cell adhesion molecule 2; LECAM2; CD62E; SELE; ELAM1;
<b>Accession:</b>	P16581 LYAM2_HUMAN;
<b>Specificity:</b>	Human E-Selectin
<b>Storage:</b>	Store at 4°C
<b>Specific References:</b>	<p>Bang OY et al. (2018) "Biomarker for Diagnosis of Moyamoya disease." United States Patent Application 20180030535. Application: ELISA, Species: Human.</p> <p>Bang OY et al. (2016) "Caveolin-1, Ring finger protein 213, and endothelial function in Moyamoya disease." Int J Stroke. [Epub ahead of print]. Application: ELISA, Species: Human.</p> <p>Bang OY et al. (2015) "Brain Microangiopathy and Macroangiopathy Share Common Risk Factors and Biomarkers" Atherosclerosis In press. Application: ELISA, Species: Human, blood. Biomarker, intracranial atherosclerosis, small artery disease, Risk factor, renal function, Endothelial function</p>
<b>Kit components:</b>	The ELISA kit box contains 2 x 96 pre-coated strip plates, protein standards, detection reagents, substrate buffer and precise instructions.
<b>Range:</b>	125 pg/ml - 8,000 pg/ml
<b>Sensitivity:</b>	< 4 pg/ml
<b>Kit protocol:</b>	Please refer to our online product listing for current protocol/MSDS versions.

---

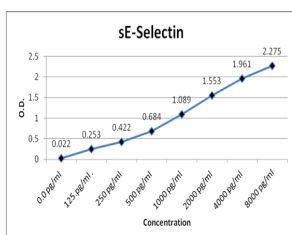
FOR RESEARCH USE ONLY



## Human Soluble E-Selectin (sE-Selectin) ELISA Kit (2 plates)

Concentration pg/ml	0.0 pg/ml	125 pg/ml	250 pg/ml	500 pg/ml	1000 pg/ml	2000 pg/ml	4000 pg/ml	8000 pg/ml
O.D.	0.022	0.253	0.422	0.684	1.080	1.553	1.961	2.275

This standard curve is for demonstration purposes only. A standard curve should be generated for each assay.



biosensis

FOR RESEARCH USE ONLY