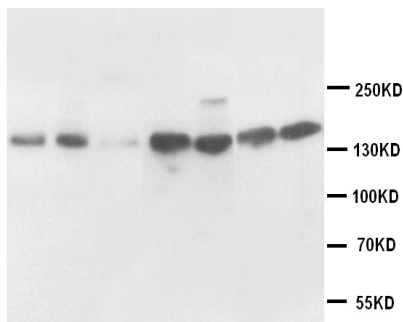


Rabbit polyclonal antibody to human Nitric Oxide Synthase 1 (1418-1434): Affinity purified

Catalogue No.:	R-1323-100
Description:	Nitric oxide synthase (NOS) catalyses the formation of nitric oxide, an important messenger molecule in functions such as homeostasis and synaptic plasticity. NOS is classified into three types: (1) neuronal NOS (nNOS) or brain NOS (bNOS) (2) inducible NOS (iNOS) or macrophage NOS (mNOS) and (3) endothelial NOS (eNOS).
Batch No.:	See product label
Unit size:	100 ug
Antigen:	A synthetic peptide (IAFIEESKKDTDEVFSS) corresponding to a sequence (1418-1434 aa) from human Nitric Oxide Synthase 1.
Other Names:	neuronal NOS; nNOS; brain NOS; bNOS; NOS type 1; NOS1; NC-NOS; Constitutive NOS;
Accession:	P29475 NOS1_HUMAN; P29476 NOS1_RAT;
Produced in:	Rabbit
Purity:	Affinity purified on antigen column
Applications:	Western Blotting (WB) and Immunohistochemistry (IHC). A concentration of 1.0 ug/mL is recommended for WB. Human NOS (nNOS-1) has a predicted length of 1,434 residues and MW of 161 kDa. A concentration of 2.0 ug/mL is recommended to detect the protein in formalin fixed and paraffin embedded tissues. Heat mediated antigen retrieval is required. Biosensis recommends optimal dilutions/concentrations should be determined by the end user.
Specificity:	The specificity of this antibody has been confirmed by WB in human and rat and by IHC in rat.
Cross-reactivity:	Human; rat;
Form:	Lyophilised with 5mg BSA, 0.9mg NaCl, 0.2mg Na ₂ HPO ₄ , 0.05mg Thimerosal, 0.05mg Na ₃
Reconstitution:	Reconstitute in 100 uL of sterile distilled water to achieve an antibody concentration of 1 mg/mL. Centrifuge to remove any insoluble material.
Storage:	At least 12 months after purchase at 2-8C (lyophilized formulations). After reconstitution, aliquot and store at -20C for a higher stability. Avoid freeze-thaw cycles
Expiry Date:	12 months after purchase



Western Blot using Rabbit polyclonal antibody to human Nitric Oxide Synthase 1 (R-1323-100) at 1µg/ml: Lane 1 and 2: Rat brain tissue lysate Lane 3: Rat medulla oblongata tissue lysate Lane 4: MCF-7 Whole cell lysate Lane 5: SMMC Whole cell lysate Lane 6: SW620 Whole cell lysate Lane 7: Colo320 Whole cell lysate

FOR RESEARCH USE ONLY