

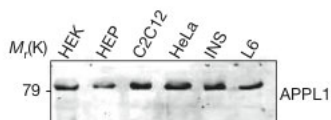


Rabbit polyclonal antibody to human APPL1 (455-709): Whole serum

Catalogue No.:	R-1331-100
Description:	APPL1 (adaptor protein containing PH domain, PTB domain and leucine zipper motif 1) mediates adiponectin signaling in various types of cells. APPL1 is also thought to have a role in insulin signaling.
Batch No.:	See product label
Unit size:	100 uL
Antigen:	The C-terminus of Human APPL1 protein (amino acids: 455-709) conjugated to GST.
Other Names:	DCC-interacting protein 13-alpha; Dip13-alpha; Adapter protein containing PH domain; PTB domain and leucine zipper motif 1; APPL1; APPL; DIP13A; KIAA1428;
Accession:	Q9UKG1 DP13A_HUMAN;
Produced in:	Rabbit
Purity:	Whole serum
Applications:	Western Blotting (WB) and Immunoprecipitation (IP). A dilution of 1:1,000 is recommended for WB. A concentration of 3 uL/reaction is recommended for IP. Biosensis recommends optimal dilutions/concentrations should be determined by the end user.
Cross-reactivity:	This antiserum is known to recognise both mouse and human APPL1.
Form:	Lyophilised
Appearance:	White powder
Reconstitution:	Reconstitute in 100 uL of sterile distilled water. Centrifuge to remove any insoluble material.
Storage:	At least 12 months after purchase at 2-8C (lyophilized formulations). After reconstitution, aliquot and store at -20C for a higher stability. Avoid freeze-thaw cycles.
Expiry Date:	12 months after purchase
References:	<ol style="list-style-type: none">1. Mao X. et al (2006) APPL1 binds to adiponectin receptors and mediates adiponectin signalling and function Nat Cell Biol. 2006 May;8(5):516-23.2. Wang C. et al (2009) Yin-Yang regulation of adiponectin signaling by APPL isoforms in muscle cells J Biol Chem. 2009 Nov 13;284(46):31608-15.3. Zhou L. et al (2009) Adiponectin activates AMP-activated protein kinase in muscle cells via APPL1/LKB1-dependent and phospholipase C/Ca2+/Ca2+/calmodulin-dependent protein kinase kinase-dependent pathways J Biol Chem. 2009 Aug 14;284(33):22426-35

FOR RESEARCH USE ONLY

Rabbit polyclonal antibody to human APPL1 (455-709): Whole serum



Western Blot showing APPL1 expression in mammalian cells. Lysates from HEK293 (HEK), mouse hepatocytes (HEP), differentiated C2C12 myotubes (C2C12), HeLa, INS1 and L6 cells were separated by SDS-PAGE and examined by western blot using Rabbit polyclonal antibody to human APPL1, catalog number R-1331-100. Image courtesy of Mao X. et al (2006) Nat Cell Biol.

biosensis

FOR RESEARCH USE ONLY