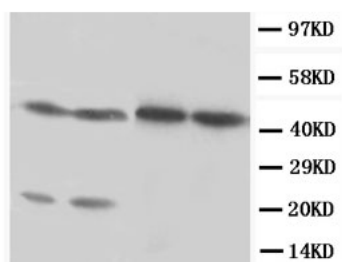


## Rabbit polyclonal antibody to rat Oxysterols receptor LXR-alpha (375-398): Affinity purified

<b>Catalogue No.:</b>	R-1339-100
<b>Description:</b>	LXR-alpha is an orphan receptor that belongs to the nuclear hormone receptor family. It is expressed in adult spleen, pituitary, lung, liver and fat (Ref: SWISSPROT).
<b>Batch No.:</b>	See product label
<b>Unit size:</b>	100 ug
<b>Antigen:</b>	A synthetic peptide (QVERLQHTYVEALHAYVSINHPHD) corresponding to a region (375-398) from the C-terminus of rat Oxysterols receptor LXR-alpha.
<b>Sequence:</b>	QVERLQHTYVEALHAYVSINHPHD
<b>Antibody Type:</b>	Antiserum
<b>Other Names:</b>	Liver X receptor alpha; Nuclear receptor subfamily 1 group H member 3; RLD-1; Nr1h3; Lxra; NR1H3; LXRA;
<b>Accession:</b>	Q62685 NR1H3_RAT;
<b>Produced in:</b>	Rabbit
<b>Applications:</b>	Western Blotting (WB). A concentration of 1.0 ug/mL is recommended for WB. Rat Oxysterols receptor LXR-alpha protein has a predicted length of 445 amino acids and MW of 51 kDa. Biosensis recommends optimal dilutions/concentrations should be determined by the end user.
<b>Specificity:</b>	The specificity of this antibody has been confirmed by WB against the antigen.
<b>Species Against:</b>	Rat
<b>Antibody Against:</b>	Oxysterols receptor LXR-alpha
<b>Cross-reactivity:</b>	Rat; predicted to react with mouse due to sequence homology;
<b>Form:</b>	Lyophilised with 5mg BSA, 0.9mg NaCl, 0.2mg Na <sub>2</sub> HPO <sub>4</sub> , 0.05mg Thimerosal, 0.05mg NaN <sub>3</sub>
<b>Appearance:</b>	Lyophilized white powder
<b>Reconstitution:</b>	Reconstitute in 100 uL of sterile distilled water to achieve an antibody concentration of 1 mg/mL. Centrifuge to remove any insoluble material.
<b>Storage:</b>	At least 12 months after purchase at 2-8C (lyophilized formulations). After reconstitution, aliquot and store at -20C for a higher stability. Avoid freeze-thaw cycles.
<b>Expiry Date:</b>	12 months after purchase



Western Blot using Rabbit polyclonal antibody to rat Oxysterols receptor LXR-alpha: Lanes 1 and 2: Rat liver tissue lysate Lane 3: MCF-7 Whole cell lysate Lane 4: Hela Whole cell lysate

FOR RESEARCH USE ONLY