

## Rabbit polyclonal antibody to Protein S100-B (58-64): Affinity purified

<b>Catalogue No.:</b>	R-1345-100
<b>Description:</b>	THIS PRODUCT HAS BEEN SUPERCEDED. PLEASE REFER TO THE "REPLACED BY" FIELD BELOW TO LOCATE THE CURRENT BIOSENSIS PRODUCT TO MEET YOUR RESEARCH NEEDS. Protein S100 beta belongs to the S100 family of proteins containing 2 EF-hand calcium binding motifs. S100 proteins are localized in the cytoplasm and/or nucleus of a wide range of cells, and are involved in the regulation of a number of cellular processes such as cell cycle progression and differentiation. Among brain cells, S100 beta is often used as a marker for astrocytes. The 2 subunits of S100 protein are the products of separate genes. The beta subunit is present in all S100 positive cells and tumours whereas the alpha subunit is detectable only in specific tissues such as heart, skeletal muscle and brain. The S100 protein is a homodimer composed of two alpha subunits (S100a) or two beta subunits (S100b) or as a heterodimer with one alpha and beta subunit (S100ab or S100ao).
<b>Replaced by:</b>	R-1734-100
<b>Batch No.:</b>	See product label
<b>Unit size:</b>	100 µg
<b>Antigen:</b>	A synthetic peptide corresponding to a region (58-64 aa) from human Protein S100 beta (S100b).
<b>Antibody Type:</b>	Antiserum
<b>Other Names:</b>	S100B; Calcium binding protein B1; S-100 protein beta chain; S-100 protein subunit beta; S100 calcium-binding protein B;
<b>Accession:</b>	P04271 S100B_HUMAN;
<b>Produced in:</b>	Rabbit
<b>Applications:</b>	Western Blotting (WB) and Immunohistochemistry (IHC). A concentration of 1.0 µg/ml is recommended for WB. Human S100b protein (precursor) has a predicted length of 92 amino acids and MW of 11 kDa. A concentration of 1.0 µg/ml is recommended for IHC (paraffin). Heat mediated antigen retrieval is recommended. Biosensis recommends optimal dilutions/concentrations should be determined by the end user.
<b>Specificity:</b>	The specificity of this antibody has been confirmed by WB and IHC against the antigen.
<b>Cross-reactivity:</b>	Human (WB); rat (WB, IHC); predicted to react with mouse due to sequence homology;
<b>Form:</b>	Lyophilised with 5mg BSA, 0.9mg NaCl, 0.2mg Na <sub>2</sub> HPO <sub>4</sub> , 0.05mg Thimerosal, 0.05mg NaN <sub>3</sub>
<b>Appearance:</b>	Lyophilized white powder
<b>Reconstitution:</b>	Reconstitute in 100 µl of sterile distilled water to achieve an antibody concentration of 1 mg/ml. Centrifuge to remove any insoluble material.
<b>Storage:</b>	At least 12 months after purchase at 2 - 4°C (lyophilized formulations). After reconstitution, aliquot and store at -20°C for a higher stability. Avoid freeze-thaw cycles
<b>Expiry Date:</b>	12 months after purchase

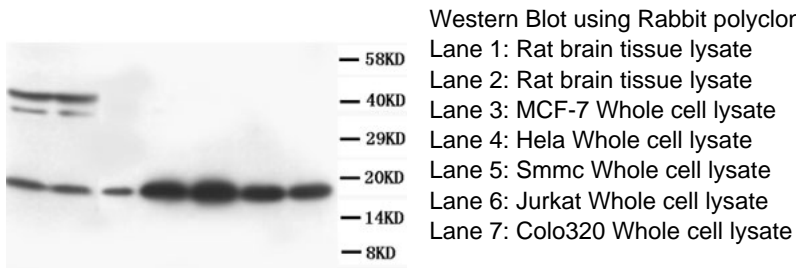
---

FOR RESEARCH USE ONLY

## Rabbit polyclonal antibody to Protein S100-B (58-64): Affinity purified

### References:

Yasuda Y. et al. Relationship between S100beta and GFAP expression in astrocytes during infarction and glial scar formation after mild transient ischemia. Brain Res. 2004 Sep 17;1021(1):20-31.



*biosensis*

---

FOR RESEARCH USE ONLY