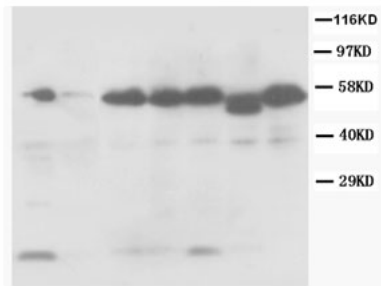


Rabbit polyclonal antibody to Caspase-8 (223-242): Affinity purified

Catalogue No.:	R-1350-100
Description:	Caspase-8 is involved in the programmed cell death induced by Fas and various apoptotic stimuli. Many alternatively spliced transcript variants encoding different isoforms have been described. (Ref: Entrez Gene). Recent observations in microglia have implicated caspase 8 as a modulator of microglial activation in absence of cell death.
Batch No.:	See product label
Unit size:	100 ug
Antigen:	A synthetic peptide (DKVYQMKS K PRGYCLIINNH) corresponding to a region (223-242 aa) from human Caspase-8.
Sequence:	DKVYQMKS K PRGYCLIINNH
Antibody Type:	Antiserum
Other Names:	CASP-8; Apoptotic cysteine protease; Apoptotic protease Mch-5; CAP4; FADD-homologous ICE/ced-3-like protease; FADD-like ICE; FLICE; ICE-like apoptotic protease 5; MORT1-associated ced-3 homolog; MACH; MCH5;
Accession:	Q14790 CASP8_HUMAN;
Produced in:	Rabbit
Applications:	Western Blotting (WB). A concentration of 1.0 ug/mL is recommended for WB. Human Caspase-8 (Isoform 1 precursor) has a predicted length of 479 amino acids and MW of 55 kDa. Biosensis recommends optimal dilutions/concentrations should be determined by the end user.
Specificity:	The specificity of this antibody has been confirmed by WB against the antigen.
Antibody Against:	Caspase-8
Cross-reactivity:	Human; rat; predicted to react with mouse due to sequence homology;
Form:	Lyophilised with 5mg BSA, 0.9mg NaCl, 0.2mg Na ₂ HPO ₄ , 0.05mg Thimerosal, 0.05mg NaN ₃
Appearance:	Lyophilized white powder
Reconstitution:	Reconstitute in 100 uL of sterile distilled water to achieve an antibody concentration of 1 mg/mL. Centrifuge to remove any insoluble material.
Storage:	At least 12 months after purchase at 2-8C (lyophilized formulations). After reconstitution, aliquot and store at -20C for a higher stability. Avoid freeze-thaw cycles.
Expiry Date:	12 months after purchase
General References:	1. Burguillos M.A. Caspase signalling controls microglia activation and neurotoxicity. Nature. 2011 Apr 21;472(7343):319-24.

FOR RESEARCH USE ONLY

Rabbit polyclonal antibody to Caspase-8 (223-242): Affinity purified



Western Blot using Rabbit polyclonal antibody to Caspase-8:

Lane 1: Rat Thymus tissue lysate

Lane 2: Rat liver tissue lysate

Lane 3: MCF-7 Whole cell lysate

Lane 4: Hela Whole cell lysate

Lane 5: Smmc Whole cell lysate

Lane 6: Jurkat Whole cell lysate

Lane 7: Colo320 Whole cell lysate

biosensis

FOR RESEARCH USE ONLY
