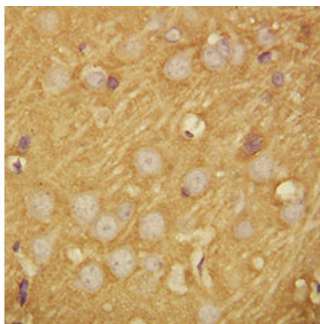




## Rabbit polyclonal antibody to Synaptosomal-associated protein 25 (187-201): Affinity purified

<b>Catalogue No.:</b>	R-1356-100
<b>Description:</b>	SNAP25 forms part of the SNARE core complex and associates with proteins involved in vesicle docking and membrane fusion (Ref: SWISSPROT).
<b>Batch No.:</b>	See product label
<b>Unit size:</b>	100 ug
<b>Antigen:</b>	A synthetic peptide (SNKTRIDEANQRATK) corresponding to a region (187-201 aa) from the C-terminus of human Synaptosomal-associated protein 25 (SNAP25).
<b>Sequence:</b>	SNKTRIDEANQRATK
<b>Antibody Type:</b>	Antiserum
<b>Other Names:</b>	SNAP-25; Super protein; SUP; Synaptosomal-associated 25 kDa protein; Snap25; Snap;
<b>Accession:</b>	P60881 SNAP25_RAT;
<b>Produced in:</b>	Rabbit
<b>Applications:</b>	Immunohistochemistry (IHC) and Western Blotting (WB). A concentration of 1.0 ug/mL is recommended for WB. Rat SNAP25 (isoform SNAP-25b) has a predicted length of 206 residues and MW of 23 kDa. A concentration of 1.0 ug/mL is recommended for IHC to detect the protein in formalin fixed and paraffin embedded tissues. Biosensis recommends optimal dilutions/concentrations should be determined by the end user.
<b>Specificity:</b>	The specificity of this antibody has been confirmed by WB and IHC against the antigen.
<b>Antibody Against:</b>	Synaptosomal-associated protein 25
<b>Cross-reactivity:</b>	Rat; predicted to react with mouse and human due to sequence homology;
<b>Form:</b>	Lyophilised with 5mg BSA, 0.9mg NaCl, 0.2mg Na <sub>2</sub> HPO <sub>4</sub> , 0.05mg Thimerosal, 0.05mg Na <sub>3</sub>
<b>Appearance:</b>	Lyophilized white powder
<b>Reconstitution:</b>	Reconstitute in 100 uL of sterile distilled water to achieve an antibody concentration of 1 mg/mL. Centrifuge to remove any insoluble material.
<b>Storage:</b>	At least 12 months after purchase at 2-8C (lyophilized formulations). After reconstitution, aliquot and store at -20C for a higher stability. Avoid freeze-thaw cycles.
<b>Expiry Date:</b>	12 months after purchase



Immunohistochemical staining of rat brain tissue with Rabbit polyclonal antibody to Synaptosomal-associated protein 25.

FOR RESEARCH USE ONLY