



Rabbit polyclonal antibody to human Gremlin-1 (165-184): Affinity purified

Catalogue No.:	R-1360-100
Description:	THIS PRODUCT HAS BEEN SUPERCEDED. PLEASE REFER TO THE "REPLACED BY" FIELD BELOW TO LOCATE THE CURRENT BIOSENSIS PRODUCT TO MEET YOUR RESEARCH NEEDS. Gremlin-1 is a secreted cytokine that may play a role during carcinogenesis and metanephric kidney organogenesis, as a BMP antagonist required for early limb outgrowth and patterning in maintaining the FGF4-SHH feedback loop. It down-regulates the BMP4 signaling in a dose-dependent manner. It also acts as inhibitor of monocyte chemotaxis. It is highly expressed in small intestine, fetal brain and colon. Weakly expressed in brain, ovary, prostate, pancreas and skeletal muscle. In brain found in the region localized around the internal capsule in the large subcortical nuclei, including caudate, putamen, substantia nigra, thalamus and subthalamus. Predominantly expressed in normal cells including neurons, astrocytes and fibroblasts. Gremlin-1 is induced through TGF-beta 1-mediated pathways in Mesangial cell and it is down-regulated in tumor cell lines.
Batch No.:	See product label
Unit size:	100 Åµg
Antigen:	A synthetic peptide (TKKKRVTRVKQCRCISIDL) corresponding to a region (165-184 aa) from the C-terminus of human Gremlin-1.
Sequence:	TKKKRVTRVKQCRCISIDL
Antibody Type:	Antiserum
Other Names:	Cysteine knot superfamily 1 BMP antagonist 1; Increased in high glucose protein 2; IHG-2; Down-regulated in Mos-transformed cells protein; DAN domain family member 2; Cell proliferation-inducing gene 2 protein GREM1; CKTSF1B1; DAND2; DRM
Accession:	O60565 GREM1_HUMAN;
Produced in:	Rabbit
Applications:	Immunohistochemistry (IHC) and Western Blotting (WB). A concentration of 1.0 Åµg/ml is recommended for WB. Human Gremlin-1 (isoform 1) has a predicted length of 184 residues and MW of 21 kDa. A concentration of 1.0 Åµg/ml is recommended for IHC to detect the protein in formalin fixed and paraffin embedded tissues. Heat mediated antigen retrieval is required. Biosensis recommends optimal dilutions/concentrations should be determined by the end user.
Specificity:	The specificity of this antibody has been confirmed by WB (Human, Rat) and IHC (Human, Rabbit) against the antigen.
Antibody Against:	Gremlin-1
Cross-reactivity:	Human; rat; rabbit; predicted to react with mouse due to sequence homology;
Form:	Lyophilised with 5mg BSA, 0.9mg NaCl, 0.2mg Na ₂ HPO ₄ , 0.05mg Thimerosal, 0.05mg NaN ₃
Appearance:	Lyophilized white powder
Reconstitution:	Reconstitute in 100 Åµl of sterile distilled water to achieve an antibody concentration of 1 mg/ml. Centrifuge to remove any insoluble material.

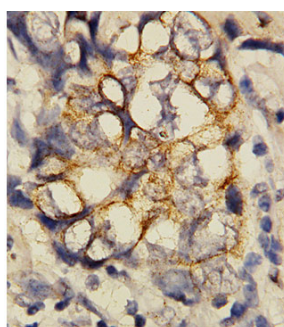
FOR RESEARCH USE ONLY



Rabbit polyclonal antibody to human Gremlin-1 (165-184): Affinity purified

Storage: At least 12 months after purchase at 2 - 4°C (lyophilized formulations).
After reconstitution, aliquot and store at -20°C for a higher stability and at 4°C with an appropriate antibacterial agent.
Avoid freeze-thaw cycles

Expiry Date: 12 months after purchase



Immunohistochemical staining of human mammary cancer tissue with Rabbit polyclonal antibody to Gremlin-1.

biosensis

FOR RESEARCH USE ONLY