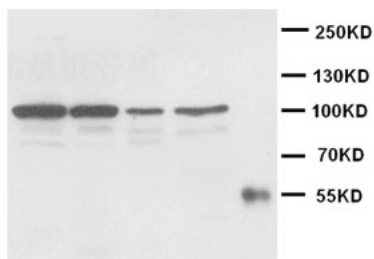


Rabbit polyclonal antibody to Cadherin-2 (701-714): Affinity purified

| | |
|--------------------------|--|
| Catalogue No.: | R-1367-100 |
| Description: | Cadherins are transmembrane glycoproteins that mediate calcium ion-dependent cell adhesion. The cadherin family includes N-, P-, R-, B- and E-cadherins which are found in adherens junctions. |
| Batch No.: | See product label |
| Unit size: | 100 ug |
| Antigen: | A synthetic peptide (CQCDSNGDCTDVDR) corresponding to a region (701-714 aa) from human Cadherin-2. |
| Sequence: | CQCDSNGDCTDVDR |
| Antibody Type: | Antiserum |
| Other Names: | CDH; N-cadherin; Neural Cadherin; Cadherin-2; P-cadherin; R-cadherin; B-cadherin; E-cadherin; CD325; CDH2; CDHN; NCAD; |
| Accession: | P19022 CADH2_HUMAN; Q9Z1Y3 CADH2_RAT; |
| Produced in: | Rabbit |
| Applications: | Western Blotting (WB). A concentration of 1.0 ug/mL is recommended for WB. Rat Cadherin-2 has a predicted length of 906 amino acids and MW of 100 kDa. Biosensis recommends optimal dilutions/concentrations should be determined by the end user. |
| Specificity: | The specificity of this antibody has been confirmed by WB against the antigen. |
| Antibody Against: | Cadherin-2 |
| Cross-reactivity: | Rat; Human; predicted to react with mouse due to sequence homology; |
| Form: | Lyophilised with 5mg BSA, 0.9mg NaCl, 0.2mg Na ₂ HPO ₄ , 0.05mg Thimerosal, 0.05mg Na ₃ |
| Appearance: | Lyophilized white powder |
| Reconstitution: | Reconstitute in 100 uL of sterile distilled water to achieve an antibody concentration of 1 mg/mL. Centrifuge to remove any insoluble material. |
| Storage: | At least 12 months after purchase at 2-8C (lyophilized formulations). After reconstitution, aliquot and store at -20C for a higher stability. Avoid freeze-thaw cycles. |
| Expiry Date: | 12 months after purchase |



Western Blot using Rabbit polyclonal antibody to Cadherin-2: Lanes 1 and 2: Rat liver tissue lysate Lane 3: Rat brain tissue lysate Lane 4: Rat testicular tissue lysate Lane 5: IgG marker

FOR RESEARCH USE ONLY