



## Rabbit polyclonal antibody to Smad 1,2,3,5 (442-456): Affinity purified

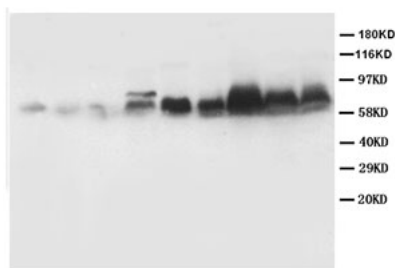
<b>Catalogue No.:</b>	R-1368-100
<b>Description:</b>	Smad proteins are essential mediators of signal transduction by the TGF-beta superfamily from the cell surface into the nucleus. Once in the nucleus, Smad proteins target a number of DNA binding proteins to stimulate transcription.
<b>Batch No.:</b>	See product label
<b>Unit size:</b>	100 ug
<b>Antigen:</b>	A synthetic peptide (GPLQWLDKVLTMGS) corresponding to a region (442-456 aa) from the C-terminus of human Smad 1,2,3,5.
<b>Sequence:</b>	GPLQWLDKVLTMGS
<b>Antibody Type:</b>	Antiserum
<b>Other Names:</b>	Mothers against decapentaplegic homolog; MAD homolog; Mothers against DPP homolog; JV4-1; Mad-related protein; SMAD family member; SMAD 1; SMAD 2; SMAD 3; SMAD 5; Smad1; Smad2; Smad3; Smad5; hSMAD1; hSMAD2; hSMAD3; hSMAD5; Transforming growth factor-beta-signaling protein 1; BSP-1; SMAD1; SMAD2; SMAD3; SMAD5; BSP1; MADH1; MADR1; JV18-1; hMAD-2; Mad3; hMAD-3; hMAD-2; MADH2; MADH3; MADH5; JV5-1;
<b>Accession:</b>	Q15797 SMAD1_HUMAN; Q15796 SMAD2_HUMAN; P84022 SMAD3_HUMAN; Q99717 SMAD5_HUMAN;
<b>Produced in:</b>	Rabbit
<b>Applications:</b>	Western Blotting (WB). A concentration of 1.0 ug/mL is recommended for WB. Biosensis recommends optimal dilutions/concentrations should be determined by the end user.
<b>Specificity:</b>	The specificity of this antibody has been confirmed by WB against the antigen.
<b>Antibody Against:</b>	Smad 1,2,3,5
<b>Cross-reactivity:</b>	Human and rat; predicted to react with mouse due to sequence homology;
<b>Form:</b>	Lyophilised with 5mg BSA, 0.9mg NaCl, 0.2mg Na <sub>2</sub> HPO <sub>4</sub> , 0.05mg Thimerosal, 0.05mg NaN <sub>3</sub>
<b>Appearance:</b>	Lyophilized white powder
<b>Reconstitution:</b>	Reconstitute in 100 uL of sterile distilled water to achieve an antibody concentration of 1 mg/mL. Centrifuge to remove any insoluble material.
<b>Storage:</b>	At least 12 months after purchase at 2-8C (lyophilized formulations). After reconstitution, aliquot and store at -20C for a higher stability. Avoid freeze-thaw cycles.
<b>Expiry Date:</b>	12 months after purchase

---

FOR RESEARCH USE ONLY



## Rabbit polyclonal antibody to Smad 1,2,3,5 (442-456): Affinity purified



Western Blot using Rabbit polyclonal antibody to Smad 1,2,3,5: Lane 1 : Rat heart tissue lysate Lane 2: Rat skeletal muscle tissue lysate Lane 3: Rat kidney tissue lysate Lane 4: Rat brain tissue lysate Lane 5: MM453 Whole cell lysate Lane 6: MM231 Whole cell lysate Lane 7: HeLa Whole cell lysate Lane 8: SMMC Whole cell lysate Lane 9: SW620 Whole cell lysate

biosensis

---

FOR RESEARCH USE ONLY