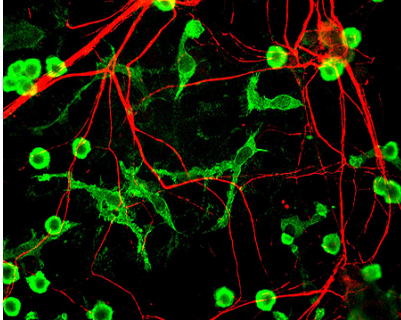


Chicken polyclonal antibody to Internexin alpha

| | |
|--------------------------|---|
| Catalogue No.: | C-1377-50 |
| Description: | Neurofilaments can be defined as the intermediate or 10nm diameter filaments found in neuronal cells. They are composed a mixture of subunits which often includes the neurofilament triplet proteins, NF-L, NF-M and NF-H. Neurofilaments may also include peripherin, alpha-internexin, nestin and in some cases vimentin. Alpha-internexin is a ~66 kDa Class IV intermediate filament subunit expressed in large amounts early in neuronal development, but is downregulated in many neurons as development proceeds. Many classes of mature neurons contain alpha-internexin in addition to NF-L, NF-M and NF-H. In some mature neurons alpha-internexin is the only neurofilament subunit expressed. Antibodies to alpha-internexin are therefore unique probes to study and classify neuronal types and follow their processes in sections and in tissue culture. In addition the very early developmental expression of alpha-internexin means its presence is an early and convenient diagnostic feature of neuronal progenitors cells and other cell committed to the neuronal lineage. |
| Batch No.: | See product label |
| Unit size: | 50 uL |
| Antigen: | Recombinant rat alpha-internexin expressed and purified from E. coli |
| Isotype: | IgY |
| Other Names: | 66 kDa neurofilament protein; NF-66; Neurofilament-66; Alpha-internexin; Alpha-Inx; Neurofilament 5; INA; NEF5; |
| Accession: | Q16352 AINX_HUMAN; P23565 AINX_RAT; |
| Produced in: | Chicken |
| Applications: | Western Blotting (WB), Immunocytochemistry (ICC) and Immunohistochemistry (IHC). A dilution of 1:5,000 - 10,000 is recommended for WB. A dilution of 1:500-1,000 is recommended for ICC and IHC. Biosensis recommends optimal dilutions/concentrations should be determined by the end user. |
| Specificity: | The specificity of this antibody has been confirmed by WB. This antibody is specific for the 64-66 kDa alpha-internexin protein. Molecular weight will depend on species. |
| Antibody Against: | Internexin alpha |
| Cross-reactivity: | Human, Rat, Mouse, Feline. It is predicted to react with other mammals. |
| Form: | Lyophilised with 5% trehalose |
| Appearance: | White powder |
| Reconstitution: | Reconstitute in sterile distilled water. Centrifuge to remove any insoluble material. |
| Storage: | After reconstitution of lyophilised antibody, aliquot and store at -20C for a higher stability. Avoid freeze-thaw cycles. |
| Expiry Date: | 12 months after purchase |

FOR RESEARCH USE ONLY

Chicken polyclonal antibody to Internexin alpha



Mixed neuron glia cultures stain with Chicken polyclonal antibody to Internexin alpha C-1377-50 (red) and counterstained with Rabbit polyclonal antibody to Coronin 1a: Whole serum, R-1335-50 (green) which is an excellent marker of microglia and lymphocytes. This internexin antibody is an excellent marker of neuronal processes in these cultures.

biosensis

FOR RESEARCH USE ONLY