

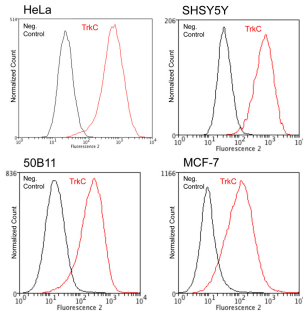
## Mouse monoclonal antibody to Tyrosine Kinase Receptor C (TrkC, 397-408), extracellular domain [BS337]: IgG

<b>Catalogue No.:</b>	M-1837-100
<b>Description:</b>	Receptor tyrosine kinase involved in nervous system and probably heart development. Upon binding of its ligand NTF3/neurotrophin-3, NTRK3 autophosphorylates and activates different signaling pathways, including the phosphatidylinositol 3-kinase/AKT and the MAPK pathways, that control cell survival and differentiation (Ref: uniprot.org).
<b>Related products:</b>	R-1835-100, Rabbit antibody to Tyrosine Kinase Receptor C (TrkC; 172-186): affinity purified
<b>Batch No.:</b>	See product label
<b>Unit size:</b>	100 ug
<b>Antigen:</b>	Synthetic peptide immunogen, KEPFPESTDNFI
<b>Sequence:</b>	KEPFPESTDNFI
<b>Antigen Location:</b>	Extracellular domain of TrkC (amino acids 397-408 of human TrkC)
<b>Antibody Type:</b>	Mouse monoclonal
<b>Isotype:</b>	IgG2b, kappa
<b>Clone:</b>	BS337
<b>Other Names:</b>	GP145-TrkC; Trk-C; Neurotrophic tyrosine kinase receptor type 3; TrkC tyrosine kinase
<b>Accession:</b>	NTRK3_HUMAN
<b>Produced in:</b>	Mouse
<b>Purity:</b>	Protein G purified
<b>Applications:</b>	Flow Cytometry (5-10 ug/mL): Tested on human and rodent cell lines. Cell staining can be performed under native conditions on ice, or on fixed cells with up to 4% formaldehyde. Immunocytochemistry (1-2 ug/mL): Tested on fixed (4% formaldehyde) human cells. Other applications have not been tested. Biosensis recommends optimal dilutions/concentrations should be determined by the end user.
<b>Specificity:</b>	TrkC
<b>Species Against:</b>	Human
<b>Cross-reactivity:</b>	Mouse and rat TrkC. Species cross-reactivity determined by Flow Cytometry.
<b>Form:</b>	Lyophilized from PBS, pH 7.2-7.6 with 0.1% trehalose.
<b>Reconstitution:</b>	Spin vial briefly before opening. Reconstitute in 100 uL sterile distilled water to obtain an antibody concentration of 1 mg/mL. Centrifuge to remove any insoluble material.
<b>Storage:</b>	Store lyophilised antibody at 2-8C. After reconstitution divide into aliquots and store at -20C for long-term storage. Store at 2-8C short-term (up to 4 weeks). Avoid repetitive freeze/thaw cycles.
<b>Expiry Date:</b>	12 months after purchase if unopened

---

FOR RESEARCH USE ONLY

## Mouse monoclonal antibody to Tyrosine Kinase Receptor C (TrkC, 397-408), extracellular domain [BS337]: IgG



TrkC expression (red) in human (HeLa, SHSY5Y, MCF-7) and rat x mouse hybrid cell line 50B11 analysed by Flow Cytometry. Staining was performed on unfixed cells on ice. Blocking: 100 ug/mL normal sheep IgG in PBS (30 minutes) on ice. Primary antibody: TrkB clone BS337 (10 ug/mL) for 60 minutes on ice. Secondary antibody: Goat anti-rabbit PE (1:100 dilution), 30 min in dark on ice. Non-specific control IgG clone X63 (black) was used as negative control under same conditions. Flow cytometry data and results were generated using Orflo Moxiflow™ instrument and protocols.

biosensis

---

FOR RESEARCH USE ONLY