

## Neurotrophin 3 (NT3) Rapid ELISA Kit: Human, Rat and Mouse (1 Plate)

**Catalogue No.:** BEK-2221-1P

**Description:** The Biosensis NT3 Rapid™ enzyme-linked immune-sorbent assay (ELISA) Kit is a sandwich ELISA that allows the specific, fast and reliable quantification of NT3 in less than 4 hours in cell culture supernatants and human plasma (EDTA and citrate) only if used as directed. Please refer to the kit protocol for specific use instructions for each substrate application, in particular human plasma. Accurate quantification of NT3 in human plasma requires a heterophilic antibody (HA) blocker which can be purchased separately (BL-004-500).

This ELISA kit consists of a pre-coated polyclonal anti-NT3 capture antibody, a biotinylated monoclonal anti-NT3 detection antibody and horseradish peroxidase (HRP)-conjugated streptavidin. The addition of a substrate (3,3',5,5'-tetramethylbenzidine, TMB) yields a colored reaction product, which is directly proportional to the concentration of NT3 present in samples and protein standards. A human NT3 positive control (QC sample) is provided to assure consistent assay performance.

This NT3 Rapid™ ELISA kit employs a recombinant human NT3 standard. NT3 is highly conserved and nearly identical in many species. The assay's capture and detection antibodies detect NT3 from other species including mouse, rat and monkey, thus it is expected that this NT3 Rapid™ ELISA will also react with those species and possibly more because of the conservation of the immunogen used.

The antibodies used in this kit bind to epitopes within the mature domain of NT3. Thus, this ELISA kit may detect the full-length pro-form of NT3.

This kit has not been tested for other applications. Sufficient amount of NT3 standard is supplied to allow for spike- and recovery experiments in order to validate this ELISA assay for other sample matrices if required. This kit has been configured for research use only and is not to be used in diagnostic or clinical procedures.

**Related products:** BL-004-500, Heterophilic antibody blocker: Sample diluent additive for accurate quantification or NT3 in human plasma (EDTA and citrate).

**Batch No.:** Refer to the product label.

**Antigen:** NT3 is understood to be important in promote the survival of visceral and proprioceptive sensory neurons. It is a secreted protein that belongs to the NGF-beta family and is found in brain and peripheral tissues.

**Other Names:** Neurotrophin-3; Neurotrophic factor; HDNF; Nerve growth factor 2; NGF-2; Ntf3; Ntf-3

**Accession:** NTF3\_HUMAN

**Specificity:** Human. The capture and detection antibodies used detect NT3 from other species including mouse, rat and monkey, thus it is expected that this NT3 Rapid™ ELISA will also react with

---

FOR RESEARCH USE ONLY

## Neurotrophin 3 (NT3) Rapid ELISA Kit: Human, Rat and Mouse (1 Plate)

those species.

**Storage:** Store at 2-8C.

**Expiry Date:** 12 months from purchase.

**Specific References:** Bavaresco DV et al. (2018) Depressive symptoms and neurotrophin levels in ostomy patients. *J Bras Psiquiatr.* 67(3). Application: Human serum.

Shen W et al. (2017) Effects of Ranibizumab and Aflibercept on Human Müller Cells and Photoreceptors under Stress Conditions. *Int J Mol Sci.* 2017 Mar 1;18(3). pii: E533. doi: 10.3390/ijms18030533. Application: Human cell line supernatants.

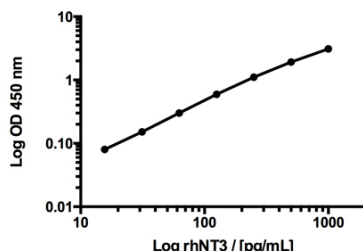
**Kit components:** The ELISA kit box contains 1 x 96-well pre-coated strip plate, protein standards, QC sample, detection reagents, wash and sample buffers, substrate buffer and detailed protocols.

**Range:** 15.6 - 1000 pg/mL

**Sensitivity:** This NT3 ELISA kit typically detects a minimum of 5 pg/mL NT3 (defined as 150% of blank value).

**Kit protocol:** Please refer to our online product listing for current protocol/MSDS versions.

**MSDS:** Please refer to our online product listing for current protocol/MSDS versions.



This standard curve generated in our laboratories is for demonstration purposes only, but can be used as a guide to expected performance. A standard curve should be generated for each assay.

---

FOR RESEARCH USE ONLY