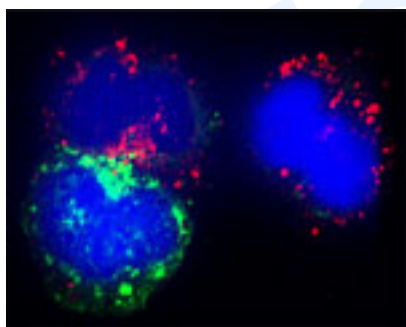


## Rabbit antibody to Beclin-1: whole serum

<b>Catalogue No.:</b>	R-141-100
<b>Description:</b>	Beclin-1 plays a central role in autophagy. It may also play a role in antiviral host defense. It is ubiquitously expressed and it localises to the cytoplasm, golgi apparatus membrane, and in dendrites and cell bodies of cerebellar Purkinje cells. The unprocessed precursor has a length of 450 amino acids and an estimated molecular weight of 51.89 kDa.
<b>Batch No.:</b>	See product label
<b>Unit size:</b>	100 uL
<b>Antigen:</b>	C-terminal of human Beclin-1 conjugated to Blue Carrier Protein.
<b>Other Names:</b>	Coiled-coil myosin-like BCL2-interacting protein; Protein GT197; APG 6; BECN1;
<b>Accession:</b>	BCN1_HUMAN
<b>Produced in:</b>	Rabbit
<b>Purity:</b>	Whole serum
<b>Applications:</b>	IHC. A dilution of 1:100 to 1:2000 dilution is recommended for these applications. Biosensis recommends optimal dilutions/concentrations should be determined by the end user.
<b>Specificity:</b>	Specific for Beclin-1.
<b>Cross-reactivity:</b>	Human, other species have not yet been tested.
<b>Form:</b>	Lyophilised
<b>Reconstitution:</b>	Reconstitute in 100 uL of sterile water. Centrifuge to remove any insoluble material.
<b>Storage:</b>	After reconstitution keep aliquots at -20C for a higher stability, and at 2-8C with an appropriate antibacterial agent. Avoid repetitive freeze/thaw cycles.
<b>Expiry Date:</b>	Six months after purchase



Confocal microscopy on immunofluorescently detected Beclin-1 in cytospin-isolated human white blood cells using Rabbit antibody to Beclin-1: whole serum (R-141-100) at a dilution of 1: 200, incubated for 1 h at room temperature. The cells were double-stained for Beclin 1 appearing in red and Myeloperoxidase appearing in green. The cells were counter stained with Hoechst Dye (blue colour). Here, the merged picture is presented.

---

FOR RESEARCH USE ONLY