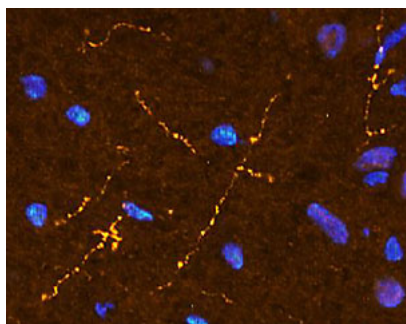


## Rabbit polyclonal antibody to human Somatostatin (103-116)

<b>Catalogue No.:</b>	R-1502-50
<b>Description:</b>	Somatostatin is secreted by neuroendocrine neurons in hypothalamus and interacts with somatostatin receptors inhibiting secretion of somatotropin.
<b>Batch No.:</b>	See product label
<b>Unit size:</b>	50 ug
<b>Antigen:</b>	Synthetic Somatostatin peptide (103-116) conjugated to BSA.
<b>Sequence:</b>	AGCKNFFWKFTTSC
<b>Antigen Location:</b>	103-116
<b>Other Names:</b>	SST; Growth hormone release-inhibiting factor; SRIF; Growth hormone-inhibiting hormone; GHIH;
<b>Accession:</b>	P61278 SMS_HUMAN;
<b>Produced in:</b>	Rabbit
<b>Applications:</b>	A dilution of 5-10 ug/mL is recommended for immunohistochemistry using formalin fixed and paraffin embedded tissues and for 4% paraformaldehyde fixed frozen tissues. A dilution of 5-15 ug/mL is recommended for Immunocytochemistry. Biosensis recommends optimal dilutions/concentrations should be determined by the end user.
<b>Species Against:</b>	Human
<b>Antibody Against:</b>	Somatostatin
<b>Cross-reactivity:</b>	Human, mouse, rat
<b>Form:</b>	Lyophilised with BSA
<b>Appearance:</b>	White powder
<b>Reconstitution:</b>	Reconstitute in 0.05 mL of PBS (pH 7.4). Centrifuge to remove any insoluble material.
<b>Storage:</b>	At least 12 months after purchase at 2-8C (lyophilized formulations). After reconstitution, aliquot and store at -20C for up to six months for a higher stability and at 2-8C for one week with an appropriate antibacterial agent. Avoid freeze-thaw cycles
<b>Expiry Date:</b>	12 months after purchase (lyophilized).



Immunohistochemical staining in rat brainstem medulla. 4% paraformaldehyde fixed rat brain cryostat sections (10  $\mu$ m) were incubated overnight at 4°C with Rabbit polyclonal antibody to human Somatostatin (10  $\mu$ g/ml) followed by incubation with donkey anti-rabbit Rhodamine Red conjugated secondary antibody (1:200). Cell nuclei were counterstained with DAPI.

---

FOR RESEARCH USE ONLY