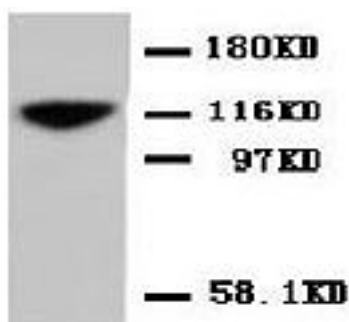


## Rabbit polyclonal antibody to Neural cell adhesion molecule 1 (842-858): Affinity purified

<b>Catalogue No.:</b>	R-999-100
<b>Description:</b>	THIS PRODUCT HAS BEEN SUPERCEDED. PLEASE REFER TO THE "REPLACED BY" FIELD BELOW TO LOCATE THE CURRENT BIOSENSIS PRODUCT TO MEET YOUR RESEARCH NEEDS. Neural cell adhesion molecule (NCAM) is a glycoprotein with 5 extracellular immunoglobulin-like domains followed by two fibronectin type III repeats. NCAM mediates cell-cell adhesion in neural cells as well as a variety of other cell types. Many isoforms are produced from the alternate splicing of a single gene with 26 exons.
<b>Replaced by:</b>	R-1610-100
<b>Batch No.:</b>	See product label
<b>Unit size:</b>	100 µg
<b>Antigen:</b>	A synthetic peptide (KTVPN DATQTKENESKA) corresponding to the region 842-858 from the C-terminus of human NCAM1 (CD56).
<b>Other Names:</b>	CD56; N-CAM 140; NCAM; NCAM1;
<b>Accession:</b>	P13591 NCAM1_HUMAN; P13596 NCAM1_RAT
<b>Produced in:</b>	Rabbit
<b>Purity:</b>	Affinity purified on antigen column
<b>Applications:</b>	Western Blotting (WB). A concentration of 1.0-2.0 µg/ml is recommended for WB. Human NCAM1 (isoform 1 precursor) has a predicted length of 858 residues and MW of 95 kDa. Biosensis recommends optimal dilutions/concentrations should be determined by the end user.
<b>Specificity:</b>	The specificity of this antibody has been confirmed by WB against the antigen.
<b>Cross-reactivity:</b>	Human; mouse; rat;
<b>Form:</b>	Liquid (0.5ml). 50% glycerol, 0.9mg NaCl and 0.2mg Na <sub>2</sub> HPO <sub>4</sub>
<b>Reconstitution:</b>	The liquid formulation should be diluted in PBS (pH 7.4)
<b>Storage:</b>	After reconstitution, aliquot and store at -20°C for a higher stability. Avoid freeze-thaw cycles.
<b>Expiry Date:</b>	12 months after purchase



Western blot using NCAM1 antibody R-999-100 at 1-2 µg/ml in rat brain tissue lysate. Secondary antibody HRP conjugated goat anti-rabbit IgG at 1:3000 dilution.

FOR RESEARCH USE ONLY