

biosensis® Human Trk-B /BDNF/NT-3 growth factors receptor/NTRK2 ELISA Kit Protocol

Catalog No: BEK-2338-2P

For quantitative detection of human Trk-B in cell culture supernatants and cell lysates only when used as directed.

TABLE OF CONTENTS

I	Materials provided.....	2
II	Equipment required but not supplied.....	2
III	Technical hints	2
IV	Storage of kit components.....	3
V	Sample preparation and dilution.....	4
VI	Reagent preparation.....	5
VII	Assay procedure.....	6
VIII	Calculation of results.....	7
IX	Typical Standard curve.....	8

For Research Use Only. Not for use in Clinical & Diagnostic Procedures 1

I. Materials Provided

Kit Components	Unit Size/Volume
Lyophilized recombinant human Trk-B standard	10 ng/tube x 4
96 wells plate pre-coated with anti-human Trk-B antibody	2 plates
Sample diluent buffer	30ml x 2
Biotinylated anti- human Trk-B antibody (dilution 1:100)	100µl x 2
Antibody diluent buffer	12ml x 2
Avidin-Biotin-Peroxidase Complex (ABC) (dilution 1:100)	100µl x 2
ABC diluent buffer	12ml x 2
TMB colour developing agent	10ml x 2
TMB stop solution	10ml x 2
PBS Wash Buffer (25X)	20 mL x 2
Plate Sealers	1 ea x 8

WARNING: DO NOT MIX REAGENTS SUCH AS ANTIBODY BUFFERS ETC BETWEEN DIFFERENT ASSAYS IF USING MULTIPLE KITS. USE ONLY THE BUFFERS, STANDARDS & SOLUTIONS INCLUDED FOR YOUR SPECIFIC LOT. MIXING SOLUTIONS FROM DIFFERENT TARGET KITS CAN LEAD TO POOR KIT PERFORMANCE

II. Equipment Required but Not Supplied

1. Distilled Water, 1000 mL +, graduated cylinders for measuring
 2. Automated plate washer is desirable
 3. Multi-channel or repeating pipette.
 4. Clean tubes and Eppendorf tubes.
 5. Plate shaker (300-500 rpm)
 6. Mechanical Vortex.
 7. Microplate reader with 450nm filter.
-

III. Technical Hints

1. Spin all kit components to get liquid to the bottom of tubes before use.
2. Duplicate well assays are recommended for both standard and sample testing.

For Research Use Only. Not for use in Clinical & Diagnostic Procedures 2

Biosensis Pty Ltd · 51 West Thebarton Road, Thebarton, South Australia, 5031
Telephone +61 08 8352 7711 · Email sales@biosensis.com · www.biosensis.com

3. In order to avoid marginal effects of plate incubation due to temperature differences, it is suggested that the ABC and TMB solutions be brought to room temperature (or 37° C if using option protocol) 30 min before use.
4. Recommended method for manual plate washing.
 - Emptying of wells on the plate:
Place the plate on the palm of the hand in a position that enables easy flicking movement using the wrist. Holding the plate over a sink, quickly invert the plate, whilst accelerating the arm downward toward the sink. Abruptly stop the downward acceleration to force the liquid from the wells into the sink. When done correctly the technique should prevent liquid from getting on to the fingers or on the outside of the strip wells or plate holder. *Note: Retain the upside down position of the plate to avoid any back flow into the wells. DO NOT LET THE PLATE DRY OUT.*
 - Blotting the plate:
Immediately blot the inverted plate by lightly tapping the plate 3-4 times on blotting paper.
 - Washing: Forcefully pipette Wash Buffer into each well with a multi-channel pipette. Empty the wells of wash buffer using technique described above. Repeat washing and flicking procedures thrice. Wash plate with 1X Wash buffer, and each time let washing buffer stay in the wells for 1-2 min before rinsing with more wash buffer as directed above. *Note: Avoid touching the inside surface of the wells with the pipette tips.*

Do not let the wells dry out at any time or enzymatic activity will be lost.

5. Preparation of Wash buffer:
 - Prepare 500 ml of Working Wash Buffer by diluting the supplied 20 ml of Wash Buffer (25 x) with 480 ml of deionized or distilled water. If crystals have formed in the concentrate, warm to room temperature and mix it gently until crystals have completely dissolved.
Note: if blank values are over 0.2 the addition of 0.05% Tween-20 PBS wash buffers will usually help lower them as well as overall assay backgrounds and can help improve signal/noise ratios.

IV. Storage of Kit Components

This kit may be stored for up to 6 months at 2°C to 8°C from the date of shipment. Standards should be stored at -20°C or -80°C (recommended at -80°C) after reconstitution. Coated strips or reagents may be store for up to 1 month at 2°C to 8°C. Return unused wells to the pack and reseal pack. *Note: the kit can be used within 8 months if the whole kit is stored at -20°C. Avoid repeated freeze-thaw cycles.*

For Research Use Only. Not for use in Clinical & Diagnostic Procedures 3

V. Sample Preparation and Dilution

- **Cell culture supernatant:** Remove particulates by centrifugation (10,000 x g 5 min), analyze immediately or aliquot and store at -20°C-80°C. Divide samples into aliquots to prevent multiple freeze thaws; use appropriate protease inhibitor cocktails for best results.

Cell lysates: Lyse with RIPA or another non-denaturing lysis buffer. The tube liquid needs to be clear before using in the ELISA. Spin at 10,000xG for 5-10 minutes at 4°C; aliquot cleared supernatants or use immediately following dilutions as recommended. RIPA typically requires a minimum dilution of 1:10. Use of proteinase inhibitor cocktail is recommended; check final pH is neutral to 7.5. Analyze immediately or aliquot and store frozen at -20°C-80°C. RIPA recipe: 150 mM sodium chloride; 1.0% NP-40 or Triton X-100; 0.5% sodium deoxycholate; 0.1% SDS (optional); 50 mM Tris, pH 8.0)

Note: The user needs to estimate the concentration of the target protein in the sample and select a proper dilution factor so that the diluted target protein concentration falls near the middle of the linear regime in the standard curve. Also with certain growth factors and target proteins, binding proteins and location can influence over all signal. It is recommended that researchers confirm by literature an effective lysis, cell membrane preparations and/or extraction buffer formulations and treatments that are suitable for the precise target being assayed.

The following table can be used as a guideline for sample dilution. Dilute the sample using the provided diluent buffer. Mix the sample thoroughly with diluent buffer.

Target protein concentration	Concentration range	Working dilution	Amount of sample diluent buffer to be added
High target protein concentration	100-1000 ng/ml	1:100	Add 1 µl sample into 99 µl sample diluent buffer
Medium target protein concentration	10-100 ng/ml	1:10	Add 10 µl sample into 90 µl sample diluent buffer
Low target protein concentration	156-10,000 pg/ml	1:2	Add 50 µl sample to 50 µl sample diluent buffer
Very Low target protein concentration	≤156 pg/ml	No dilution necessary	(working dilution is 1:2)

Sample	Intra-Assay Precision			Inter-Assay Precision		
	1	2	3	1	2	3
N	16	16	16	24	24	24
Mean(pg/ml)	267	1279	4273	292	1238	3991
SD	18.69	88.85	260.65	26.99	91.61	259.41
CV(%)	7.0	6.9	6.1	8.8	7.4	6.5

Range: 156pg/mL- 10,000 pg/mL; Sensitivity: <10 pg/mL; Specificity: Natural and recombinant Human Trk-B, assay cannot distinguish between full length and sTrkB signals. Antigen used contained nearly the entire ECD domain, but epitopes were not mapped.

VI. Reagent Preparation

1. Preparation of Standards

- Reconstitution of standard with the sample diluent provided.
 - (a) 10,000 pg/ml (10 ng/ml) of human Trk-B standard solution: Add 1ml of sample diluent buffer into **one** tube of standard, mix thoroughly and keep the tube at room temperature for 10 min. Standard is recombinant human Trk-B amino acids 32-430 expressed and purified from a mammalian cell expression system.
 - (b) 10,000 pg/ml to 156 pg/ml of human Trk-B standard solutions: Label 8 Eppendorf tubes with 10,000 pg/ml (tube 1), 5000 pg/m (tube 2), 2500 pg/mL (tube 3), 1250 pg/ml (tube 4), 625 pg/ml(tube 5), and 312 pg/ml(tube 6), 156.25 pg/mL (tube 7), 0.0 tube 8 (blank), respectively. Aliquot 0.3 ml of sample diluent buffer into tubes 2-7. From tube #1, the 10,000 pg/ml Trk-B stock standard, transfer 0.3ml from 1st tube into 2nd and mix. Continue performing serial dilutions. Tube #8 is a blank standard to be used with every experiment
- *Note: Standard solution should be prepared no more than 2 hours prior to the experiment. The working standard solution may be stored at 4°C for up to 12 hours, or at -20°C for up to 48 hours. Avoid repeated freeze-thaw cycles.*

2. Preparation of Biotinylated antibody working solution

- The total volume should be: 0.1ml/well x (the number of wells). (Allowing 0.1-0.2 ml more than total volume).
- Biotinylated antibody (Reagent B) should be diluted in 1:99 with the antibody diluent buffer and mixed thoroughly.
- *Note: the solution should be prepared no more than two hours prior to the experiment.*

3. Avidin-Biotin-Peroxidase Complex (ABC)

- The total volume should be: 0.1ml/well x (the number of wells). (Allowing 0.1-0.2 ml more than total volume).
- ABC should be diluted in 1:99 with the ABC diluent buffer and mixed thoroughly.
- *Note: the solution should be prepared no more than one hour prior to the experiment.*

VII. Assay Procedure

We recommend that standard solution dilutions and each sample are plated in duplicate. Read entire protocol before beginning; if using optional method the ABC working solution and TMB color developing agent must be kept warm at 37°C for 30 min before use.

1. Aliquot out the standards into each well of the pre-coated plate. Add 0.1ml of the sample diluent buffer into the control well (Zero well). Add 0.1ml of each properly diluted sample into each empty well. We recommend at least duplicate standards and samples. *Note: See “VII. Sample Preparation and Dilution Guideline” above for details.*
2. Seal the plate with parafilm and incubate the plate at 4°C overnight. *Note: we recommend users leave the plate on a shaker if possible.* (Optional method: 37°C, 90 minutes but it is slightly less sensitive)
3. Remove the cover, discard the plate contents and blot the plate onto paper towels or other absorbent material. **DO NOT** let the wells completely dry at any time. Wash plate 3-5 times using wash buffer as described in the technical hints. *Note: See “V. Technical Hints - Recommended method for manual plate washing” above for details.*
4. Add 0.1ml of biotinylated antibody working solution into each well. Cover and incubate the plate at room temperature on a plate shaker for 2-3 hours. (Optional 37°C, 60 minutes with shaking) Wash 3X as described in the technical hints.
5. Add 0.1ml of prepared ABC working solution (*Note: See “VIII. Reagent Preparation” above for details*) into each well. Cover and incubate the plate at room temperature on a plate shaker for 1 hour. (Optional 37°C, 30 minutes with shaking). Wash 5X as described in technical hints allowing the wash buffer to remain in the wells for 1-2 minutes.
6. Warm TMB to room temperature (37° if using optional protocol). Add 90 ul of prepared TMB color developing agent into each well and incubate **in the dark** for 30-35 minutes at RT (or 15-30 minutes at 37°C). The optimal incubation time must be empirically determined. A guideline to look for is blue shading for the top four standard wells, while the remaining standards remain clear. Stopping the reaction too quickly can lead to low standard curve values. *Note: depending upon the sample dilution the experimental samples may show color much faster, if this is the case repeating the assay at a lower sample dilution is recommended if sample O.Ds are out of range.*
7. Stop the reaction by adding 0.1ml of prepared TMB stop solution into each well. The color will change into yellow.
8. Immediately read the plate at 450nm with a microplate reader. *Note: Color will fade over time; hence, we recommend plate to be read within 30 min after adding the stop solution.*

CAUTION: Bubbles in the wells will cause inaccurate readings. Ensure that all bubbles are removed prior to taking the absorbance reading.

VIII. Calculation of Results

(a) Manual Plate Reading:

(The relative O.D.₄₅₀) = (the O.D.₄₅₀ of each well) – (the O.D.₄₅₀ of Zero well).

The standard curve can be plotted as the relative O.D.₄₅₀ of each standard solution (Y) vs. the respective concentration of the standard solution (X). Known concentrations of the target protein are plotted on the X-axis and the corresponding O.D.₄₅₀ on the Y-axis. The standard curve should result in a graph that shows a direct relationship between target protein concentrations and the corresponding O.D.₄₅₀. The greater the concentration of target protein in the sample, the higher the O.D.₄₅₀.

Note: if the samples measured were diluted, multiply the dilution factor to the concentrations from interpolation to obtain the concentration before dilution.

Determine concentration of target protein in unknown sample:

The target protein concentration of the samples can be interpolated from the standard curve. Draw a horizontal line to intersect with the standard curve. A vertical line dropped from this point intersects the X-axis at the concentration of antibody in the unknown sample.

(b) PC Interface Plate Reading

Enter the data into computer program curve fitting software. Use appropriate software to reduce the data and generate a four parameter logistic (4-PL) curve-fit; avoid using linear regression analysis. Perform a 4-PL regression analysis to calculate the concentration of target analyte in the samples. Multiply the result by the sample dilution factor. See our ELISA data analysis Technical Note on our website, www.biosensis.com for more instructions on 4_PL plotting.

Biosensis.com is your antibody and ELISA kit specialist
Helping you make sense of your research!

We offer antibodies for research in Apoptosis, Autophagy, Cancer, Development, Diabetes & Obesity, DNA Damage, GPCRs, Growth Factors, Immunology, Matrix Molecules, Neuroscience and Stem Cells.

We have over 150 highly sensitive ELISA kits with a strip format offering the highest level of sensitivity and you only need to use what you need.

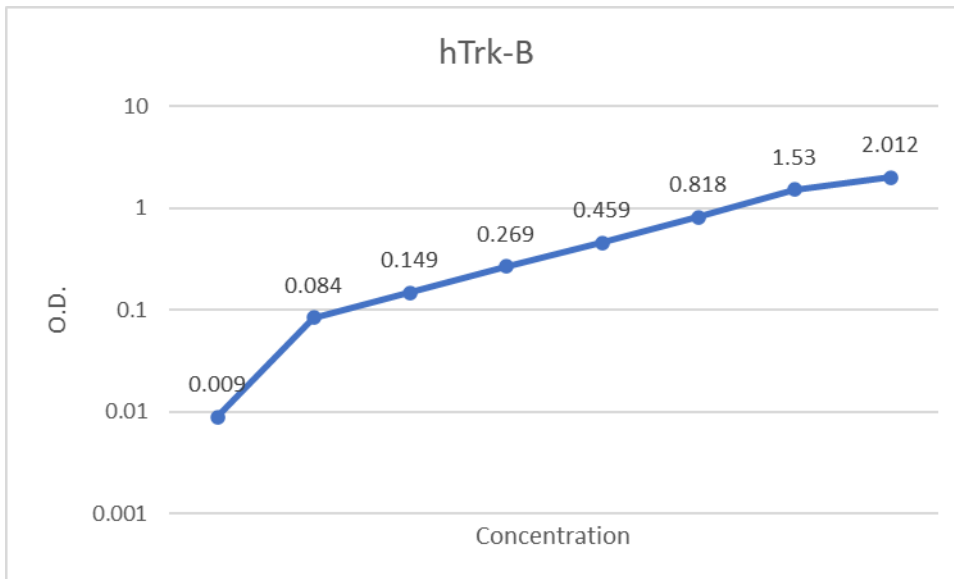
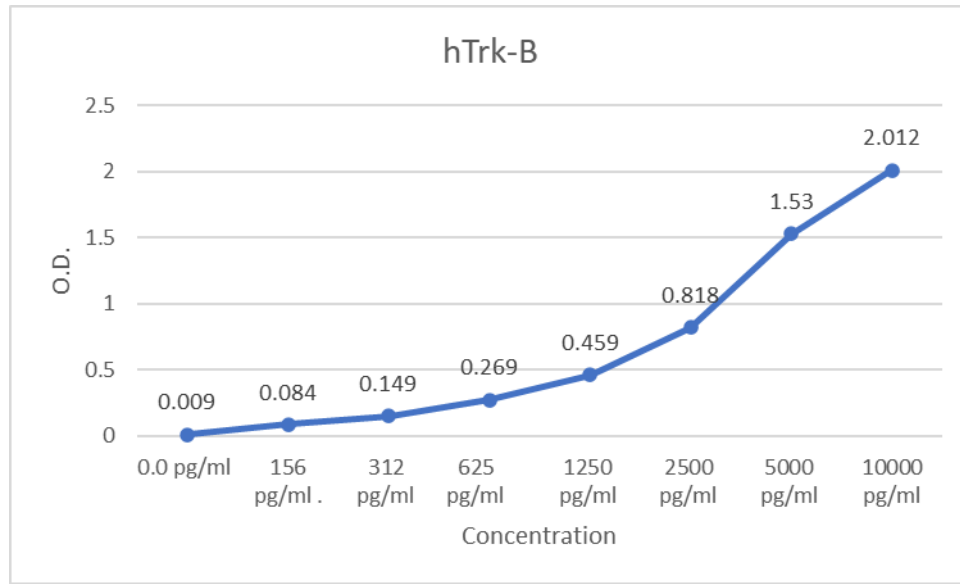
Biosensis reagents are available online directly from www.biosensis.com

For Research Use Only. Not for use in Clinical & Diagnostic Procedures 7

Biosensis Pty Ltd · 51 West Thebarton Road, Thebarton, South Australia, 5031
Telephone +61 08 8352 7711 · Email sales@biosensis.com · www.biosensis.com

IX: Typical Standard Curve (for reference only, not to be used for actual data)

Concentration pg/ml	0.0 pg/ml	156. pg/ml	312 pg/ml	625 pg/ml	1250 pg/ml	2500 pg/ml	5000 pg/ml	10000 pg/ml
O.D.	0.009	0.084	0.149	0.269	0.459	0.818	1.530	2.012



(TMB reaction incubate at 37°C for 15 min)

For Research Use Only. Not for use in Clinical & Diagnostic Procedures

8