

## Beta-Actin Antibody Clone AC-15

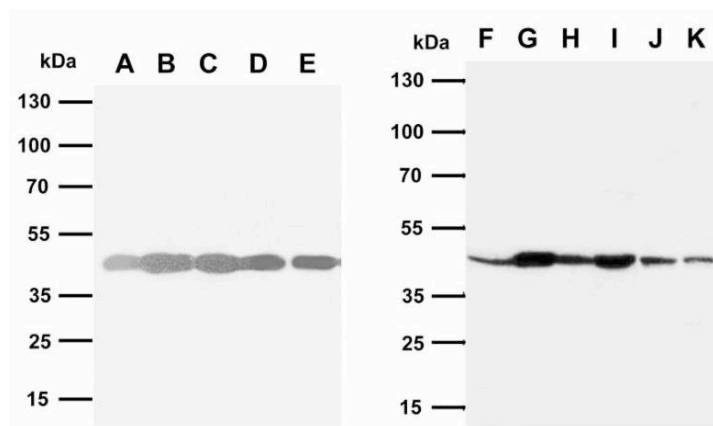
Monoclonal antibody clone AC-15 is one of the best-characterized beta-actin clones available. With more than 5,500 publications ([www.citeab.com](http://www.citeab.com)) it is widely accepted in the research community, for instance as a loading control antibody in western blotting.

### Why Pay More?

Why pay more from other suppliers when Biosensis provides the exact same high-quality beta-actin antibody clone AC-15 at the everyday Biosensis standard price:

Supplier	Volume or Amount	US\$
<b>Biosensis</b>	<b>100 µg</b>	<b>297</b>
<b>Competitor 1</b>	100 µL	319
<b>Competitor 2</b>	100 µL	361
<b>Competitor 3</b>	100 µg	377
<b>Competitor 4</b>	50 µL	475
<b>Competitor 5</b>	100 µL	550

[Find our More](#)



**Image:** Western blot analysis of beta-actin expression ([M-1613-100](#)) in cell lysates and tissue homogenates. A: rat ovary; B: rat testis; C: rat cardiac muscle; D: rat brain; E: A453 cells; F: rat liver; G: rat spleen; H: rat brain; I: rat kidney; J: HELA cells; K: SMMC cells.