

Fluoro-Jade C (RTD) 'Ready-to-Dilute' Staining Kit

Purpose: For identifying Degenerating Neurons

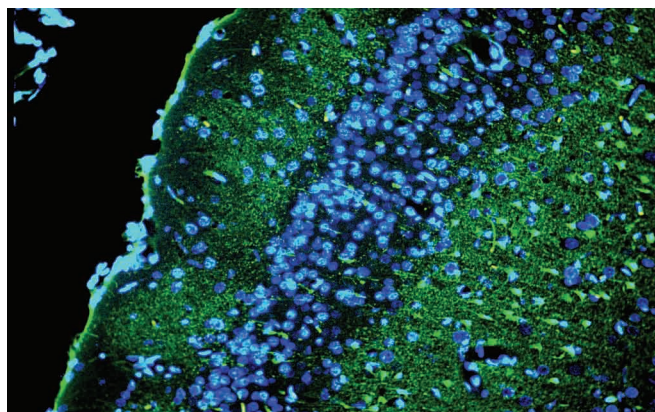
Form: Liquid 'Ready-to-Dilute'

Product Information: The causes and effects of neuronal degeneration are of major interest to a wide variety of neuroscientists. Paralleling this growing interest is an increasing number of methods applicable to the detection of neuronal degeneration. Fluoro-Jade® C stains all degenerating neurons regardless of specific insult or mechanism of cell death. Fluoro-Jade® C exhibits the greatest signal to background ratio, as well as the highest resolution. This translates to a stain of maximal contrast and affinity for degenerating neurons. This makes it ideal for localising not only degenerating nerve cell bodies but also distal dendrites, axons and terminals. The dye is highly resistant to fading and is compatible with virtually all histological processing and staining protocols.

The Fluoro-Jade® C 'Ready to Dilute' (RTD™) Staining Kit provides an easy to use assortment of Fluoro-Jade® C, DAPI, sodium hydroxide and potassium permanganate. Following our detailed protocol, Fluoro-Jade® C labelled degenerating neurons are visualised with blue light excitation while DAPI counter stained cell nuclei are visualised with ultra-violet illumination. The Fluoro-Jade® C Staining Kit can be used on all kinds of preserved tissues, including fresh-frozen, paraformaldehyde or formalin fixed, and formalin fixed, paraffin-embedded tissues.

Catalog Number: TR-100-FJ

Quantity: 40 mL (10X)



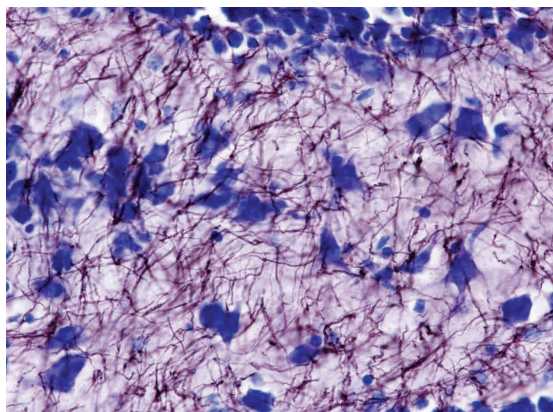
View of the superficial layers of the cingulate cortex of a rat exposed to kainic acid.

Trial-size also available

Catalog Number: TR-100-FJT

Quantity: 20 mL (10X)

Black-Gold II Myelin (RTD) 'Ready-to-Dilute' Staining Kit - with Toluidine Blue O counter stain



High magnification of the dentate gyrus of a normal mouse reveals individual Black-Gold® II stained myelinated fibers and Toluidine Blue O stained polymorph cells (center) and granule cells (top). Bright field illumination, 60X mag.

Purpose: For staining both normal and pathological myelin

Form: Liquid 'Ready-to-Dilute'

Product Information: Black-Gold® II is a novel haloaurophosphate complex which localizes myelin within the central nervous system. The use of Black-Gold® II is tailored to studies using formalin or paraformaldehyde fixed, non-paraffin embedded, non-solvent processed tissue. The Black Gold® II myelin staining kits stain large myelinated tracts dark red-brown, while the individual myelinated axons appear black.

This novel tracer can be used to localize both normal and pathological myelin. Black-Gold® II can demonstrate and characterize specific myelin changes associated with exposure to diverse neurotoxicants including kainic acid, domoic acid, 3-nitropropionic acid, Fluoro-Gold and isoniazid. Black-Gold® II can also be combined with other histochemical markers including Nissl stains, retrogradely transported fluorescent tracers and fluorescent markers of neuronal degeneration. The advantages associated with the Black-Gold® II include high resolution, high contrast, short histochemical processing time, versatility, and consistent reproducibility.

Catalog Number: TR-100-BG

Quantity: 10 mL (10X)

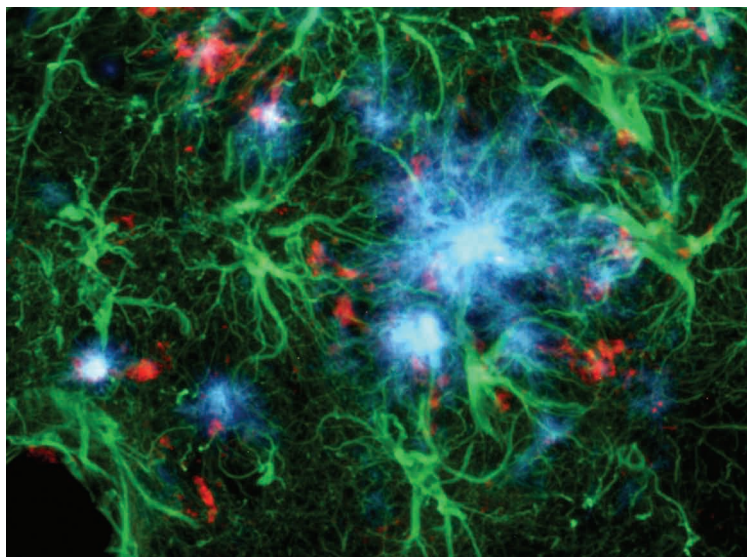
Amylo-Glo (RTD) 'Ready-to-Dilute' Amyloid Plaque Stain Reagent

Purpose: For staining amyloid plaques in tissue sections

Form: Liquid 'Ready-to-Dilute'

Product Information: Amylo-Glo® is a novel fluorescent histochemical marker for localization of amyloid plaques in brain tissue. This novel marker has several advantages over other conventional markers such as Thioflavin S and Congo Red because of its unique chemical and spectral properties. (L. Schmued et al. (2012) J.Neuroscience Methods 209:120– 126).

Biosensis is pleased to announce the availability of the new Amylo-Glo® RTD™ 'Ready-to-Dilute' Staining reagent. The use of this Staining Kit results in a very bright blue UV excitable stain under physiological conditions that will not bleed through when illuminated with other filters. Its brightness makes it ideal for low magnification quantification studies, while its unique excitation/emission profile and mild staining conditions makes it ideal for a combination of multiple immunofluorescent labeling studies. Amylo-Glo® RTD™ is compatible with fresh and frozen formalin fixed immunohisto/cytochemistry and is particularly good for confocal and multiple labeling because of its high fluorescent intensity.



This triple exposure allows for the simultaneous localization of Amylo-Glo® positive amyloid plaques (blue), GFAP positive hypertrophied astrocytes (green) and activated microglia (red) in the hippocampus of the AD/Tg mouse. Cat# TR-300-AG

Catalog Number: TR-300-AG

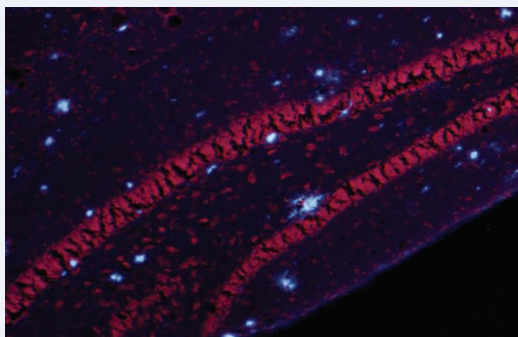
Quantity: 5 mL (100X)

Amylo-Glo - Ethidium Bromide (RTD) 'Ready-to-Dilute' Staining Kit

Catalog Number: TR-400-AG

Quantity: 40 mL (10X)

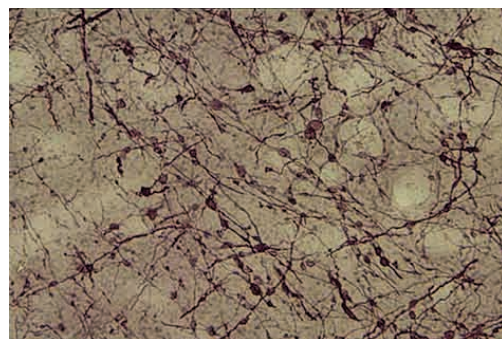
Also Available



The EB option allows visualization of both cell bodies/nuclei (red) and plaques under UV illumination for easy visual mapping. Cat# TR-400-AG

The Biosensis TR-400-AG kit utilizes an ethidium bromide counter stain for a quick and effective way to visualize cell nuclei and cell bodies of cells while under UV illumination allowing the assessment of amyloid plaques and cell/tissue positioning as well in one step. It is supplied in a Ready-to-Dilute liquid format.

NEW: Black-Gold II Myelin (RTD) 'Ready-to-Dilute' Staining Reagent



High magnification view of Black-Gold® staining of the hippocampus in the normal rat. Figure reveals individual fine myelinated fibers traversing the hippocampus.

Catalog Number: TR-500-BG

Quantity: 5 mL (10X)