

# New c-Fos Antibodies

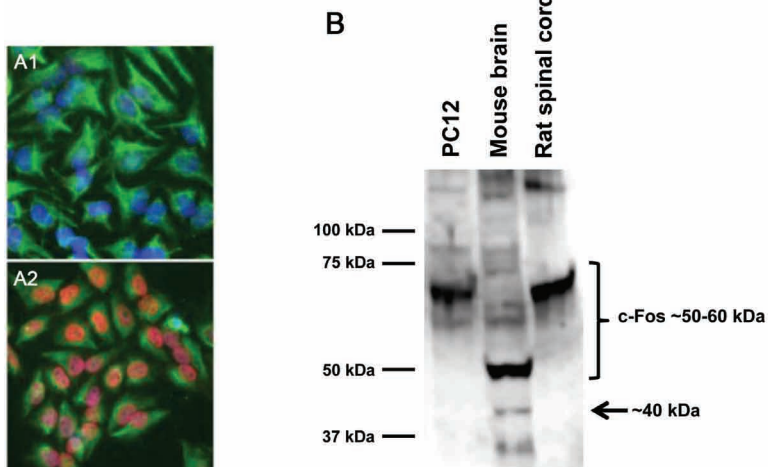
## NEW c-Fos Antibodies

- **Validated for Multiple Applications** - Immunohistochemistry, Immunocytochemistry and Western Blot.
- **Different Hosts** - Our new **Rabbit** and **Mouse** c-Fos antibodies complement our existing sheep c-Fos antibodies, giving you flexibility in your multi-labeling experiments.
- **Purified Antibodies** - Ensuring highest quality and performance.
- **Species Cross-reactivity** - Antibodies detect human and rodent c-Fos.

**NEW  
Antibodies!**

New c-Fos Antibodies					
Target	Host	Purity	Reactivity	Applications	Code
c-Fos	Rb	ap	Rat, Mouse	ICC, IHC, WB	R-1751-50
c-Fos	Ms	ap	Rat, Mouse	ICC, IHC, WB	M-1752-100

**Rabbit polyclonal antibody to rh c-Fos:**  
**Affinity purified** (Cat# R-1751-50)

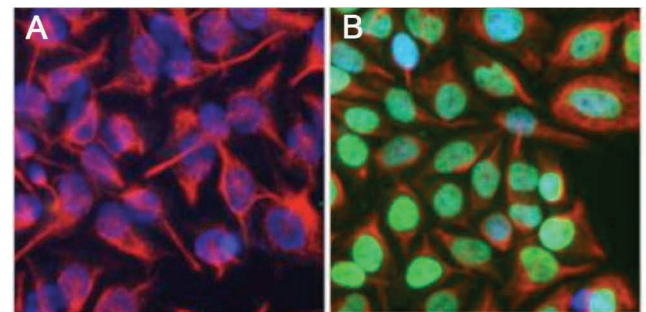


Data generated using the Li-COR® C-DiGit® Blot Scanner

Left image: Immunofluorescence staining of HeLa cells with **R-1751-50**. c-Fos staining (red) only localizes in the nuclei of 20% FBS stimulated cells (A2), but not in un-stimulated cells (A1). Cells were counter-stained with Chicken polyclonal antibody against vimentin, C-1409-50 (green) and DAPI (blue).

Right image: Western blot analysis of c-Fos expression in PC12 cell lysates (20 µg), mouse brain (50 µg) and rat spinal cord homogenate (50 µg). **R-1751-50** detects multiple c-Fos isoforms between ~50-60 kDa which are due to post-translational modifications. In mouse brain, **R-1751-50** detects a common c-Fos degradation product (~40 kDa) which appears to be lysate and preparation dependent.

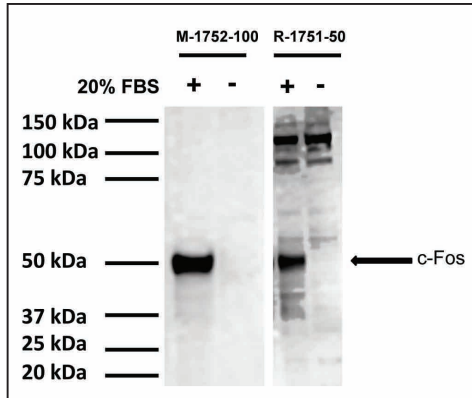
**Mouse monoclonal antibody to rh c-Fos:**  
**Affinity purified** (Cat# M-1752-100)



Immunofluorescence staining of HeLa cells with **M-1752-100**. c-Fos staining (green) only localizes in the nuclei of 20% FBS stimulated cells (B), but not in un-stimulated cells (A). Cells were counter-stained with Chicken polyclonal antibody against vimentin, C-1409-50 (red) and DAPI (blue).

# New c-Fos Antibodies

## New c-Fos Antibodies - continued



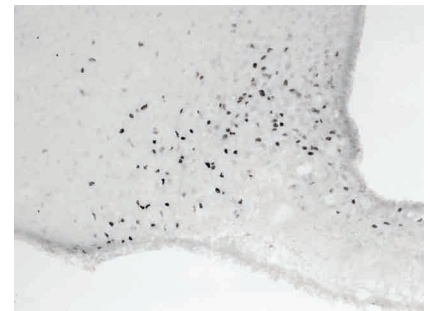
Western blot analysis of c-Fos expression in rat C6 cells (40 ug lysate loading per lane). C6 cells were serum-starved for 20 hours and then stimulated with 20% FBS for 2 hrs (+). Control cells were left in serum-depleted culture medium (-). **M-1752-100** (1 µg/mL) and **R-1751-50** (1 µg/mL) detect a strong band at 50 kDa in stimulated cells but not in control cells, representing increased c-Fos expression.

## Also available:

### Existing sheep c-Fos antibodies

Target	Host	Purity	Reactivity	Applications	Code
c-Fos	Sh	IgG	Rat, Rabbit	IHC	S-033-500
c-Fos	Sh	ap	Rat, Rabbit	IH	S-045-50

Immunostaining of c-Fos protein expression with affinity-purified sheep antibody to c-Fos, cat no. **S-045-50** (1:5000). c-Fos expression was induced in the hypothalamic arcuate nucleus of an adult male Wistar rat with i.p. injection of N-methyl-D-aspartate. Photo courtesy of Dr. Erik Hrabovszky, Hungarian Academy of Sciences, Budapest, Hungary.



## Contact us:

**In the United States:**  
Biosensis International  
**Ph:** 1800 605 5127  
sales\_US@biosensis.com

**In Australia:**  
Biosensis Pty Ltd  
**Ph:** 08 8352 7711  
sales@biosensis.com

**Address:**  
51 West Thebarton Road  
Thebarton SA 5031  
Australia