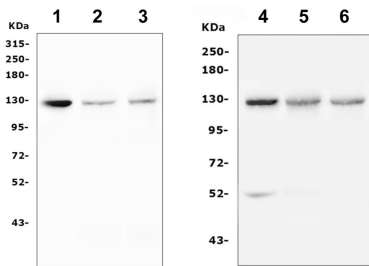


Rabbit polyclonal antibody to human Integrin alpha-6 (CD49f): Affinity purified

Catalogue No.:	R-1933-100
Description:	Integrin alpha-6/beta-1 (ITGA6:ITGB1) is a receptor for laminin on platelets (By similarity). Integrin alpha-6/beta-1 (ITGA6:ITGB1) is present in oocytes and is involved in sperm-egg fusion (By similarity). Integrin alpha-6/beta-4 (ITGA6:ITGB4) is a receptor for laminin in epithelial cells and it plays a critical structural role in the hemidesmosome (By similarity). ITGA6:ITGB4 binds to NRG1 (via EGF domain) and this binding is essential for NRG1-ERBB signaling (PubMed:20682778). ITGA6:ITGB4 binds to IGF1 and this binding is essential for IGF1 signaling (PubMed:22351760). ITGA6:ITGB4 binds to IGF2 and this binding is essential for IGF2 signaling (PubMed:28873464). Source: uniprot.org
Batch No.:	See product label
Unit size:	100 ug
Antigen:	E.coli-derived human Integrin alpha 6/ITGA6 (CD49f) recombinant protein (amino acids Q189-K917).
Antibody Type:	Rabbit polyclonal
Other Names:	Integrin alpha-6; CD49 antigen-like family member F; VLA-6; CD_antigen: CD49f
Accession:	ITA6_HUMAN
Produced in:	Rabbit
Purity:	Affinity purified
Applications:	Western blotting (0.1-0.5 ug/mL) and direct ELISA (0.1-0.5 ug/mL). Other applications have not been tested. Biosensis recommends optimal dilutions/concentrations should be determined by the end user.
Specificity:	Integrin alpha-6/CD49f
Species Against:	Human
Cross-reactivity:	Mouse, rat.
Form:	Lyophilized.
Reconstitution:	Spin vial briefly before opening. Reconstitute in 100 uL sterile distilled water to obtain an antibody concentration of 1 mg/mL. Centrifuge to remove any insoluble material.
Storage:	Store lyophilized antibody at 2-8C. After reconstitution divide into aliquots and store at -20C for long-term storage. Store at 2-8C short-term (up to 4 weeks). Avoid repetitive freeze/thaw cycles.
Expiry Date:	12 months after purchase if unopened.

FOR RESEARCH USE ONLY

Rabbit polyclonal antibody to human Integrin alpha-6 (CD49f): Affinity purified



Western blot analysis of ITGA6/CD49f expression in cell lysates (1-3) and tissue homogenates (4-6). Lane 1: human placenta tissue lysates, lane 2: human Hela whole cell lysates, lane 3: human Caco-2 whole cell lysates, lane 4: rat kidney tissue lysates, lane 5: rat lung tissue lysates, lane 6: mouse kidney tissue lysates. Loading amount: 50 ug protein per lane. SDS-PAGE: reducing conditions.

biosensis

FOR RESEARCH USE ONLY