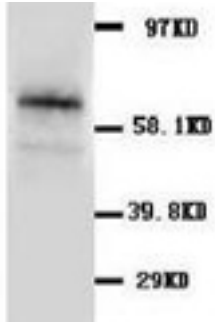


Rabbit polyclonal antibody to EAAT1/GLAST1 (516-531): Affinity purified

Catalogue No.:	R-1009-100
Description:	THIS PRODUCT IS TEMPORARILY OUT OF STOCK. PLEASE REFER TO THE "REPLACED BY" FIELD BELOW TO LOCATE THE CURRENT BIOSENSIS PRODUCT TO MEET YOUR RESEARCH NEEDS. Excitatory amino acid transporter 1 (EAAT1) is a glutamate transporter (GluT). It rapidly removes L-glutamate from the synaptic cleft which is essential for terminating the postsynaptic action of glutamate. EAAT1 is also known as high affinity sodium-dependent glutamate/aspartate transporter 1 (GLAST1). EAAT1 is highly expressed in cerebellum but is also found in the frontal cortex, hippocampus and basal ganglia.
Batch No.:	See product label
Unit size:	100 ug
Antigen:	A synthetic peptide (ENEMKKPYQLIAQDNE) corresponding to a region 516-531 from the C-terminus of human EAAT1/GLAST1.
Other Names:	SLC1A3; GLAST; GLT-1;
Accession:	P43003 EAA1_HUMAN; P24942 EAA1_RAT
Produced in:	Rabbit
Purity:	Affinity purified on antigen column
Applications:	Western Blotting (WB). A concentration of 0.5-1.0 ug/mL is recommended for WB. Human EAAT1 has a predicted length of 542 residues and a MW of 60 kDa. Biosensis recommends optimal dilutions/concentrations should be determined by the end user.
Specificity:	The specificity of this antibody has been confirmed by WB against the antigen.
Cross-reactivity:	Human; mouse; rat;
Form:	Lyophilised
Reconstitution:	Each vial contains 5 mg of BSA, 0.9 mg NaCl, 0.2 mg Na ₂ HPO ₄ , 0.05 mg Thimerosal and 0.05 mg NaN ₃ . Reconstitute in 100 uL of sterile water. Centrifuge to remove any insoluble material.
Storage:	At least 12 months after purchase at 2-8C (lyophilized formulations). After reconstitution, aliquot and store at -20C for a higher stability and at 2-8C with an appropriate antibacterial agent. Avoid freeze-thaw cycles.
Expiry Date:	12 months after purchase

FOR RESEARCH USE ONLY

**Rabbit polyclonal antibody to EAAT1/GLAST1 (516-531):
Affinity purified**



Western Blot using rabbit polyclonal antibody to EAAT1/GLAST1 on rat pancreas lysate (1µg/ml).

biosensis

FOR RESEARCH USE ONLY