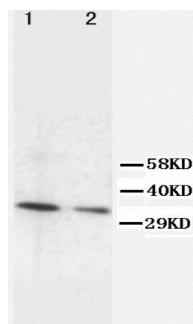


Rabbit polyclonal antibody to human G1/S-specific cyclin-D2 (46-60): Affinity purified

Catalogue No.:	R-1134-100
Description:	THIS PRODUCT HAS BEEN SUPERCEDED. PLEASE REFER TO THE "REPLACED BY" FIELD BELOW TO LOCATE THE CURRENT BIOSENSIS PRODUCT TO MEET YOUR RESEARCH NEEDS. G1/S-specific cyclin-D2 (CCND2) is a member of the Cyclin family that act as regulators of CDK kinases. CCND2 is essential for the control of the cell cycle at the G1/S transition.
Batch No.:	See product label
Unit size:	100 ug
Antigen:	A synthetic peptide (CVQKDIQPYMRRMVA) corresponding to a region (46-60) from human G1/S-specific cyclin-D2. To enhance the immunological response, this peptide was coupled to carrier protein BSA.
Other Names:	CCND2;
Accession:	P30279 CCND2_HUMAN;
Produced in:	Rabbit
Purity:	Affinity purified on antigen column
Applications:	Western Blotting (WB). A concentration of 1.0 ug/mL is recommended for WB. Human G1/S-specific cyclin-D2 has a predicted length of 289 residues and MW of 33 kDa. Biosensis recommends optimal dilutions/concentrations should be determined by the end user.
Specificity:	The specificity of this antibody has been confirmed by WB against the antigen.
Cross-reactivity:	Human; rat; predicted to react with mouse due to sequence homology;
Form:	Lyophilised with 5mg BSA, 0.9mg NaCl, 0.2mg Na ₂ HPO ₄ , 0.05mg Thimerosal, 0.05mg Na ₃
Reconstitution:	Reconstitute in 100 uL of sterile distilled water to achieve an antibody concentration of 1 mg/mL. Centrifuge to remove any insoluble material.
Storage:	At least 12 months after purchase at 2-8C (lyophilized formulations). After reconstitution, aliquot and store at -20C for a higher stability. Avoid freeze-thaw cycles
Expiry Date:	12 months after purchase



Lane 1: SMMC Cell Lysate
Lane 2: JURKAT Cell Lysate
R-1134-100: 1:1000, ECL

Western blot analysis on Cell Lysates using Rabbit polyclonal antibody to human G1/S-specific cyclin-D2 (46-60): Affinity purified, catalogue number R-1134-100.

FOR RESEARCH USE ONLY