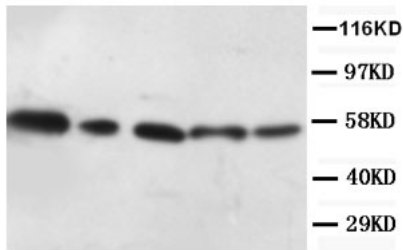


Rabbit polyclonal antibody to RAC-alpha serine/threonine-protein kinase (71-91): Affinity purified

Catalogue No.:	R-1343-100
Description:	AKT1 is a ubiquitously expressed protein kinase. AKT1 plays a key role as modulator of the AKT-mTOR signaling pathway controlling the tempo of the process of newborn neurons integration during adult neurogenesis, including correct neuron positioning, dendritic development and synapse formation (Ref: SWISSPROT).
Batch No.:	See product label
Unit size:	100 ug
Antigen:	A synthetic peptide (NTFIIRCLQWTTVIERTFHVE) corresponding to a region (71-91 aa) from human RAC-alpha serine/threonine-protein kinase (AKT1).
Sequence:	NTFIIRCLQWTTVIERTFHVE
Antibody Type:	Antiserum
Other Names:	Protein kinase B; PKB; Proto-oncogene c-Akt; RAC-PK-alpha; AKT1; PKB; RAC;
Accession:	P31749 AKT1_HUMAN;
Produced in:	Rabbit
Applications:	Immunohistochemistry (IHC) and Western Blotting (WB). A concentration of 1.0 ug/mL is recommended for WB. Human AKT1 has a predicted length of 480 residues and MW of 56 kDa. A concentration of 2.0 ug/mL is recommended for IHC to detect the protein in formalin fixed and paraffin embedded tissues. Heat mediated antigen retrieval is required. Biosensis recommends optimal dilutions/concentrations should be determined by the end user.
Specificity:	The specificity of this antibody has been confirmed by WB and IHC against the antigen.
Antibody Against:	RAC-alpha serine/threonine-protein kinase
Cross-reactivity:	Human (WB, IHC-P); rat (WB); predicted to react with mouse due to sequence homology;
Form:	Lyophilised with 5mg BSA, 0.9mg NaCl, 0.2mg Na ₂ HPO ₄ , 0.05mg Thimerosal, 0.05mg NaN ₃
Appearance:	Lyophilized white powder
Reconstitution:	Reconstitute in 100 uL of sterile distilled water to achieve an antibody concentration of 1 mg/mL. Centrifuge to remove any insoluble material.
Storage:	At least 12 months after purchase at 2-8C (lyophilized formulations). After reconstitution, aliquot and store at -20C for a higher stability. Avoid freeze-thaw cycles.
Expiry Date:	12 months after purchase

FOR RESEARCH USE ONLY

Rabbit polyclonal antibody to RAC-alpha serine/threonine-protein kinase (71-91): Affinity purified



Western Blot using Rabbit polyclonal antibody to RAC-alpha serine/threonine-protein kinase: Lane 1: MCF-7 Whole cell lysate Lane 2: Hela Whole cell lysate Lane 3: MM453 Whole cell lysate Lane 4: HT1080 Whole cell lysate Lane 5: Colo320 Whole cell lysate

biosensis

FOR RESEARCH USE ONLY
