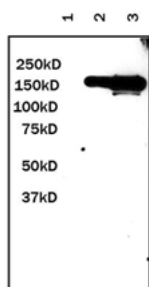


Anti-Green Fluorescent Protein Tag (Mouse Monoclonal)

Catalogue No.:	M-1305-100
Batch No.:	See product label
Unit size:	100 µg
Antigen:	Green Fluorescent Protein (GFP) from the jellyfish <i>Aequorea victoria</i> N-Terminal peptide-KLH conjugates.
Isotype:	IgG1
Other Names:	GFP;
Accession:	P42212 GFP_AEQVI;
Produced in:	Mouse
Purity:	Affinity purified
Applications:	Western Blotting, ELISA, Dot Blot, Immunoprecipitation, Immunostaining. Suggested dilution for Western Blotting of 1:1000. Biosensis recommends optimal dilutions/concentrations should be determined by the end user.
Specificity:	Recognizes native and denatured forms of Green Fluorescent Protein (GFP) and its variants; Enhanced Green Fluorescent Protein (EGFP), Yellow Fluorescent Protein (YFP), Enhanced Yellow Fluorescent Protein (EYFP) and Cyan Fluorescent Protein (CFP).
Form:	Liquid. PBS, pH 7.4 with 0.05% sodium azide. For maximum recovery of product, centrifuge the original vial after thawing and prior to opening the cap.
Storage:	Maintain for up to 12 months at -20degC in undiluted aliquots from the date of receipt. For maximum recovery of product, centrifuge the original vial after thawing and prior to opening the cap. Aliquot to avoid repeated freezing and thawing. The antibody is also stable for several weeks at 2-8degC, undiluted.
Expiry Date:	12 months after date of receipt.



Western Blot analysis of Mouse monoclonal anti-GFP tag M-1305-100. Lane 1 contains a negative control. Lane 2 contains GFP fusion protein positive 293 cells (10µg lysate) with 1µg of anti-GFP tag antibody. Lane 3 contains GFP fusion protein positive 293 cells (10µg lysate) with 10µg of anti-GFP tag antibody.

FOR RESEARCH USE ONLY